

Wedderburn Road, Belsize Park, London NW3

Weekly Rental Of £1,490



A beautifully refurbished 3 bedroom 2nd floor apartment in this period conversion boasting wood floors and carpets in the bedrooms. The property is situated in this excellent location in Hampstead, walking distance to the amenities of Belsize Park (Northern Line). Accommodation comprises spacious reception room, open plan fully fitted kitchen, master bedroom with en-suite shower room, 2 further bedrooms, family bathroom.

- Modern Design
- Moments to Belsize Lane and Village
- Period Conversion
- Managed
- Unfurnished
- Available from 01 June 2023

Call 020 7759 2199 to view this property, or visit www.vitaproperties.uk for more details

27 Northways Parade, College Crescent, London, NW3 5DN | T: 020 7759 2199 | E: enquiries@vitaproperties.uk
We make all efforts to ensure this information is accurate, but we can't guarantee it.

Wedderburn Road, Belsize Park, London NW3

Weekly Rental Of £1,490



Call 020 7759 2199 to view this property, or visit www.vitaproperties.uk for more details

27 Northways Parade, College Crescent, London, NW3 5DN | T: 020 7759 2199 | E: enquiries@vitaproperties.uk
We make all efforts to ensure this information is accurate, but we can't guarantee it.

Wedderburn Road, Belsize Park, London NW3

Weekly Rental Of £1,490

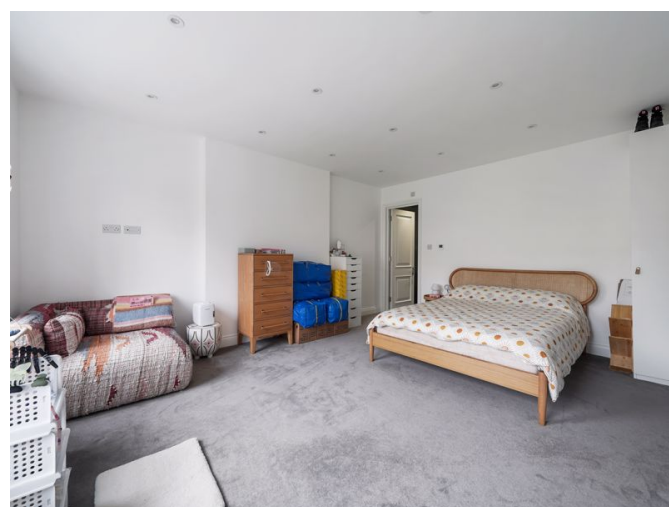


Call 020 7759 2199 to view this property, or visit www.vitaproperties.uk for more details

27 Northways Parade, College Crescent, London, NW3 5DN | T: 020 7759 2199 | E: enquiries@vitaproperties.uk
We make all efforts to ensure this information is accurate, but we can't guarantee it.

Wedderburn Road, Belsize Park, London NW3

Weekly Rental Of £1,490



Call 020 7759 2199 to view this property, or visit www.vitaproperties.uk for more details

27 Northways Parade, College Crescent, London, NW3 5DN | T: 020 7759 2199 | E: enquiries@vitaproperties.uk
We make all efforts to ensure this information is accurate, but we can't guarantee it.

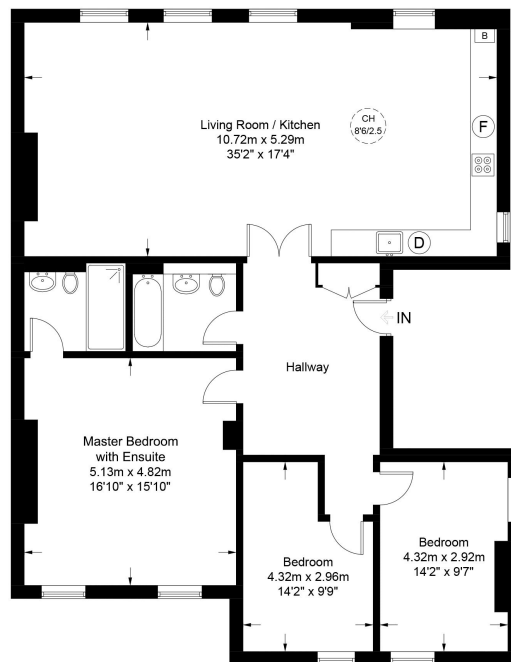
Wedderburn Road, Belsize Park, London NW3

Weekly Rental Of £1,490



Wedderburn Road, NW3

Approximate Gross Internal Area = 1436 sq ft / 133.4 sq m



Second Floor



**Certified
Property
Measurer**

This plan is for layout guidance only. Not drawn to scale unless stated. Windows and door openings are approximate. Whilst every care is taken in the preparation of this plan, please check all dimensions, shapes and compass bearings before making any decisions reliant upon them. (ID946071)

Call 020 7759 2199 to view this property, or visit www.vitaproperties.uk for more details

27 Northways Parade, College Crescent, London, NW3 5DN | T: 020 7759 2199 | E: enquiries@vitaproperties.uk
We make all efforts to ensure this information is accurate, but we can't guarantee it.

Score	Energy rating	Current	Potential
92+	A		
81-91	B		81 B
69-80	C	74 c	
55-68	D		
39-54	E		
21-38	F		
1-20	G		