



Welcome to this exquisite duplex apartment located in the prestigious new development on Greville Road. Offering two bedrooms and two bathrooms, this stunning property is presented in excellent condition, with the added benefit of access to a magnificent communal garden. Step inside and be captivated by the spaciousness of the open-plan kitchen and reception room, adorned with beautiful wooden flooring. The seamless flow of this vast living area creates the perfect setting for entertaining and relaxation. 16 Greville Road is a remarkable building that harmoniously blends in with the character of the road. Nestled within the charming suburbs of Maida Vale, South Hampstead, and Brondesbury, this location offers a serene residential ambiance while being conveniently connected to the heart of London. Transport links are easily accessible, with Maida Vale underground station (Bakerloo Line) located just 0.6 miles away, and St John's Wood underground station (Jubilee Line) a mere 0.8 miles away. This ensures effortless travel to various destinations across the city. The local area surrounding Greville Road boasts an array of pubs, restaurants, and cafes, providing endless dining and socializing options. Explore the chic stores lining St John's Wood High Street, meander along the scenic canals of Little Venice, or indulge in the historic bistros of Hampstead. Immerse yourself in the vibrant atmosphere of this sought-after neighborhood, where culture, leisure, and convenience converge. Don't miss the

- Modern Design in Period House
- Over 1,000 square feet
- Private patio and stunning communal garden
- Moments to Transport, Shops, Cafes and Restaurants
- New build with warranty
- Chain Free

Call 020 7759 2199 to view this property, or visit www.vitaproperties.uk for more details

Greville Road, Maida Vale, London NW6

£950,000

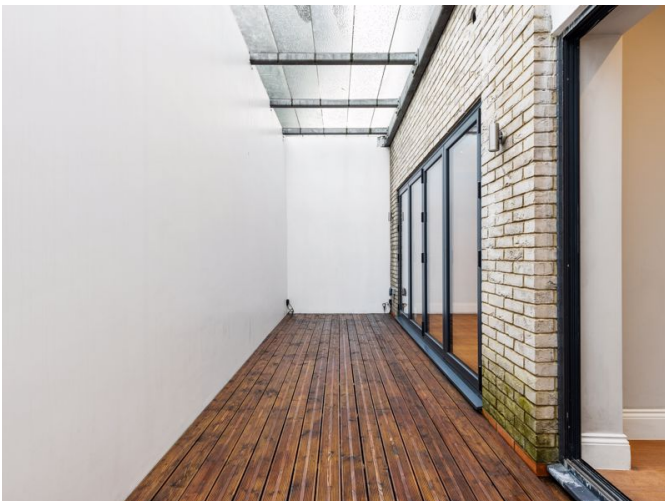


ous



Call 020 7759 2199 to view this property, or visit www.vitaproperties.uk for more details

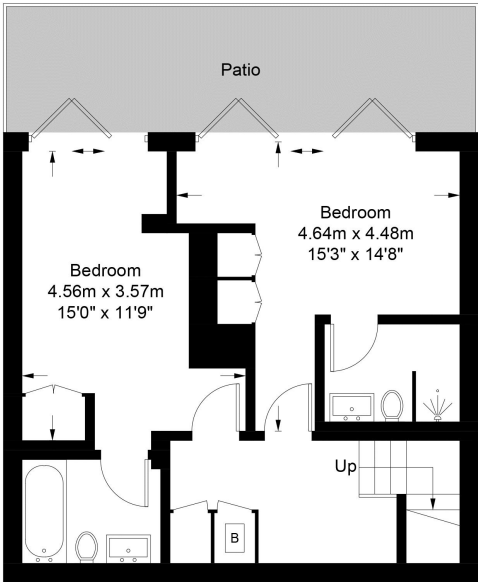
27 Northways Parade, College Crescent, London, NW3 5DN | T: 020 7759 2199 | E: enquiries@vitaproperties.uk
We make all efforts to ensure this information is accurate, but we can't guarantee it.



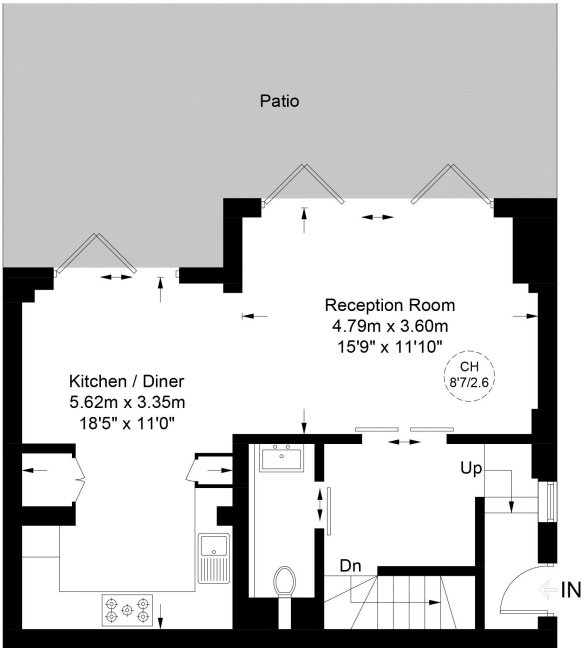


Greville Road, NW6

Approximate Gross Internal Area = 1046 sq ft / 97.2 sq m



Lower Ground Floor



Ground Floor



**Certified
Property
Measurer**

This plan is for layout guidance only. Not drawn to scale unless stated. Windows and door openings are approximate. Whilst every care is taken in the preparation of this plan, please check all dimensions, shapes and compass bearings before making any decisions reliant upon them. (ID945859)

Score	Energy rating	Current	Potential
92+	A		
81-91	B	82 B	82 B
69-80	C		
55-68	D		
39-54	E		
21-38	F		
1-20	G		