



Located on the 6th floor and boasting breath-taking views from all angles, making it the perfect place to unwind after a long day. Offering a modern and stylish finish throughout, this 2 bedroom property is situated in a highly sought-after location, within walking distance to gorgeous parks and convenient tube links. Located between the vibrant areas of St John's Wood and Swiss Cottage, there is an abundance of local amenities within easy reach. The property also benefits from secure underground parking and a 24-hour porter service, providing peace of mind and convenience for residents. With all of these fantastic features, this property makes for an exceptional home or rental opportunity not to be missed.

- Share of Freehold
- Moments to Tube and Shops
- Sixth Floor with Lift
- Fantastic Views
- Underground Parking Space for One Car
- Chain Free

Boundary Road, St John's Wood, London, NW8

£1,000,000



Call 020 7759 2199 to view this property, or visit www.vitaproperties.uk for more details

27 Northways Parade, College Crescent, London, NW3 5DN | T: 020 7759 2199 | E: enquiries@vitaproperties.uk
We make all efforts to ensure this information is accurate, but we can't guarantee it.

Boundary Road, St John's Wood, London, NW8

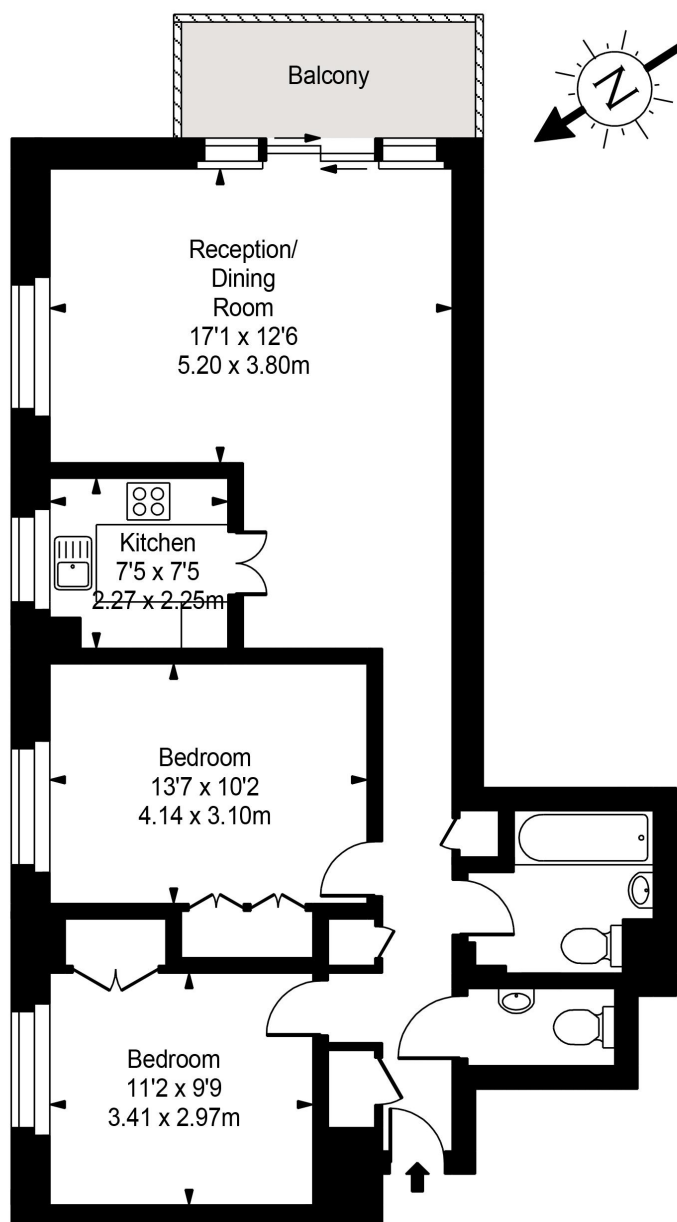
£1,000,000



Call 020 7759 2199 to view this property, or visit www.vitaproperties.uk for more details

27 Northways Parade, College Crescent, London, NW3 5DN | T: 020 7759 2199 | E: enquiries@vitaproperties.uk
We make all efforts to ensure this information is accurate, but we can't guarantee it.

Blair Court



Sixth Floor



Approx Gross Internal Area **818 Sq Ft - 75.99 Sq M**

FOR ILLUSTRATIVE PURPOSES ONLY. NOT TO SCALE.

Whilst every attempt has been made to ensure the accuracy of the floorplan shown, all measurements, positioning, fixtures, fittings and any other data shown are an approximate interpretation for illustrative purposes only and are not to scale. No responsibility is taken for any error, omission, miss-statement or use of data shown.

Floor plan by www.bestangle.co.uk

