

# Belsize Park Gardens, Belsize Park, London, NW3

## - Garden Flat

£2,750,000



A modern and spacious three bedroom garden apartment situated in this well presented white stucco fronted period conversion in the heart of Belsize Park. Boasting a bright and airy reception room and a modern fully integrated kitchen with granite surfaces and adjoining conservatory. Further benefits include two bathrooms (one en-suite), am large private garden, a guest w/c and a utility room. Ideally located for all the popular restaurants and cafes on Englands Lane and the transport links of Swiss Cottage & Belsize Park.

- Modern
- Fitted Granite Kitchen
- Conservatory
- Private Gardens
- Moments to Belsize Tube and Shops
- Chain Free

Call 020 7759 2199 to view this property, or visit [www.vitaproperties.uk](http://www.vitaproperties.uk) for more details

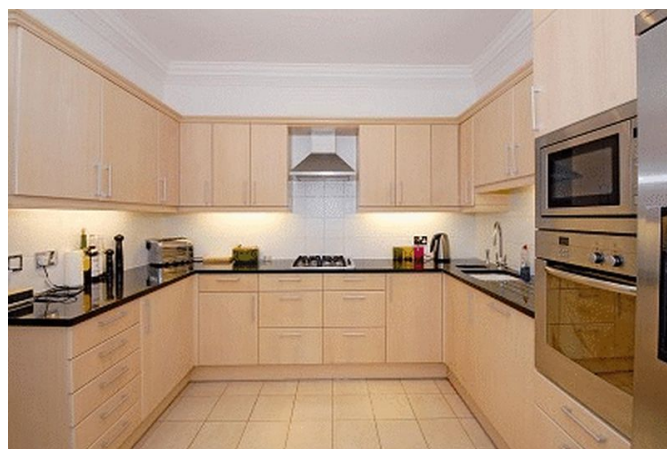
27 Northways Parade, College Crescent, London, NW3 5DN | T: 020 7759 2199 | E: [enquiries@vitaproperties.uk](mailto:enquiries@vitaproperties.uk)  
We make all efforts to ensure this information is accurate, but we can't guarantee it.



# Belsize Park Gardens, Belsize Park, London, NW3

## - Garden Flat

£2,750,000



Call 020 7759 2199 to view this property, or visit [www.vitaproperties.uk](http://www.vitaproperties.uk) for more details

27 Northways Parade, College Crescent, London, NW3 5DN | T: 020 7759 2199 | E: [enquiries@vitaproperties.uk](mailto:enquiries@vitaproperties.uk)  
We make all efforts to ensure this information is accurate, but we can't guarantee it.

# Belsize Park Gardens, Belsize Park, London, NW3

## - Garden Flat

£2,750,000



Call 020 7759 2199 to view this property, or visit [www.vitaproperties.uk](http://www.vitaproperties.uk) for more details

27 Northways Parade, College Crescent, London, NW3 5DN | T: 020 7759 2199 | E: [enquiries@vitaproperties.uk](mailto:enquiries@vitaproperties.uk)  
We make all efforts to ensure this information is accurate, but we can't guarantee it.