

Victoria Rise, Hilgrove Road, Swiss Cottage, London, NW6

Weekly Rental Of £1,900



A well presented 5 bed townhouse set in a secure gated development, NW6. Offering a large and modern kitchen and dining room, double reception room with access onto the conservatory, 5 bedrooms, 4 bathrooms (2 en-suite), guest WC, utility room, winter garden, large south-facing garden and double garage. The incredible property is located only minutes away from Swiss Cottage (Jubilee line) and South Hampstead (Overground)

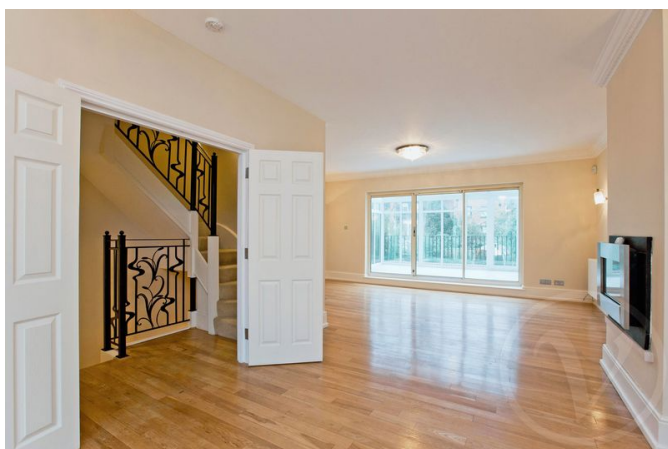
- Five Bed, Four Bath
- Set in Gated Development
- Townhouse
- Double Garage
- Garden & Winter Garden
- Pets allowed

Call 020 7759 2199 to view this property, or visit www.vitaproperties.uk for more details

27 Northways Parade, College Crescent, London, NW3 5DN | T: 020 7759 2199 | E: enquiries@vitaproperties.uk
We make all efforts to ensure this information is accurate, but we can't guarantee it.

Victoria Rise, Hilgrove Road, Swiss Cottage, London, NW6

Weekly Rental Of £1,900

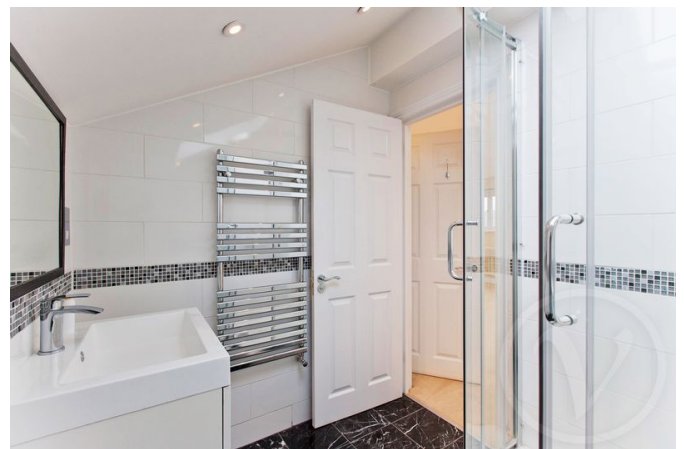


Call 020 7759 2199 to view this property, or visit www.vitaproperties.uk for more details

27 Northways Parade, College Crescent, London, NW3 5DN | T: 020 7759 2199 | E: enquiries@vitaproperties.uk
We make all efforts to ensure this information is accurate, but we can't guarantee it.

Victoria Rise, Hilgrove Road, Swiss Cottage, London, NW6

Weekly Rental Of £1,900



Call 020 7759 2199 to view this property, or visit www.vitaproperties.uk for more details

27 Northways Parade, College Crescent, London, NW3 5DN | T: 020 7759 2199 | E: enquiries@vitaproperties.uk
We make all efforts to ensure this information is accurate, but we can't guarantee it.

Victoria Rise, Hilgrove Road, Swiss Cottage, London, NW6

Weekly Rental Of £1,900



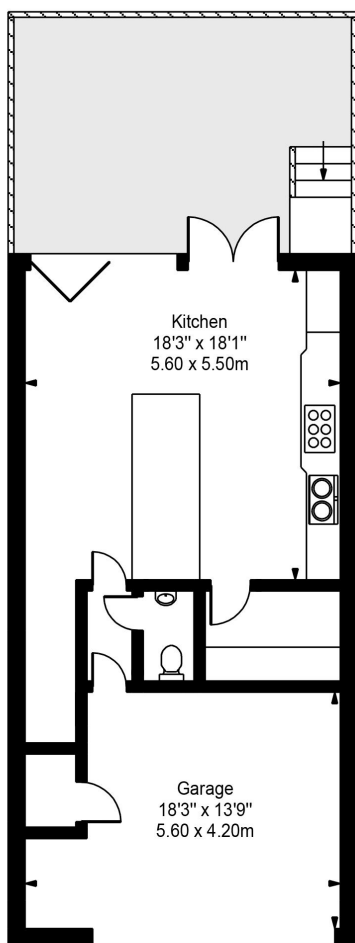
Call 020 7759 2199 to view this property, or visit www.vitaproperties.uk for more details

27 Northways Parade, College Crescent, London, NW3 5DN | T: 020 7759 2199 | E: enquiries@vitaproperties.uk
We make all efforts to ensure this information is accurate, but we can't guarantee it.

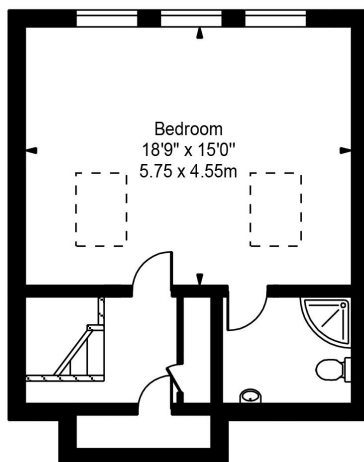
Victoria Rise, Hilgrove Road, Swiss Cottage, London, NW6

Weekly Rental Of £1,900

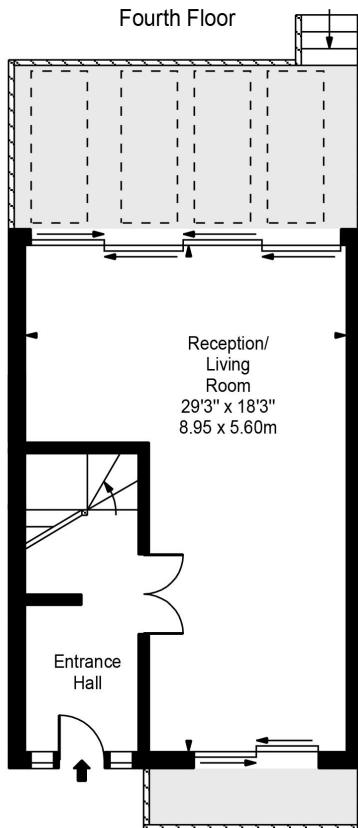
Victoria Rise



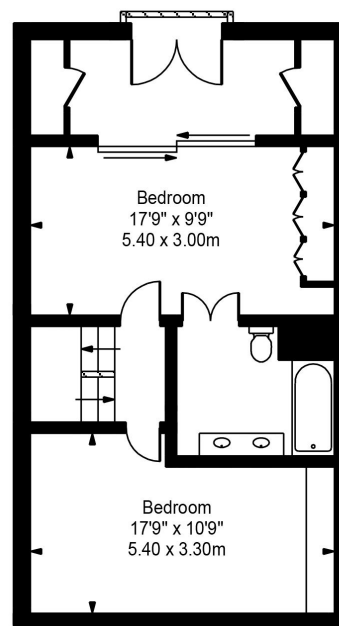
Ground Floor



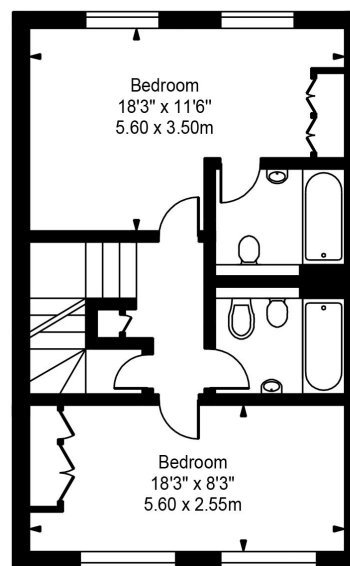
Fourth Floor



First Floor



Third Floor



Second Floor

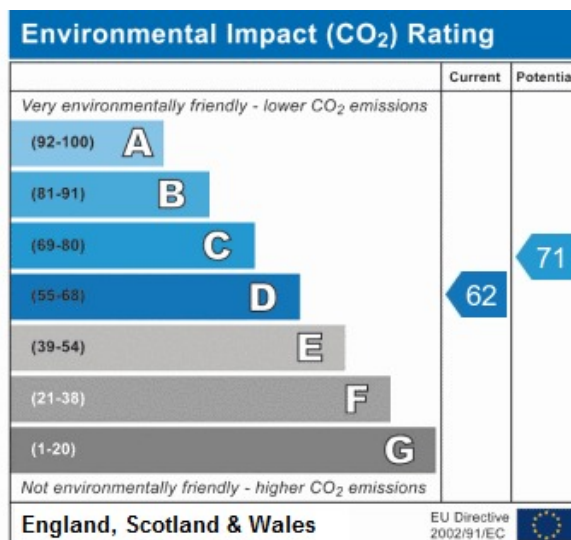
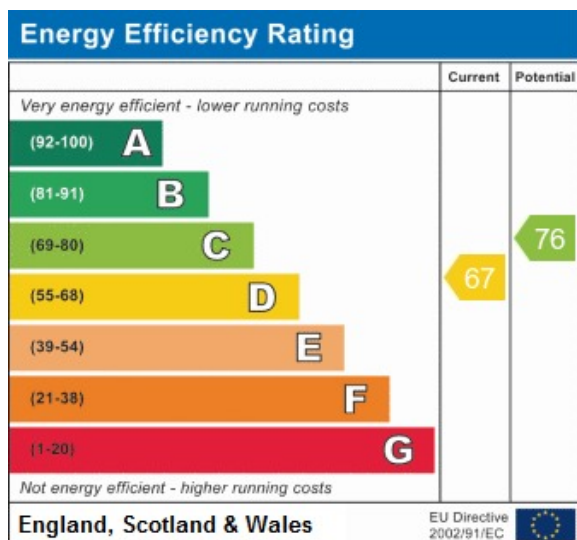
Approx Gross Internal Area **2850 Sq Ft - 264.76 Sq M**

FOR ILLUSTRATIVE PURPOSES ONLY. NOT TO SCALE.

Whilst every attempt has been made to ensure the accuracy of the floorplan shown, all measurements, positioning, fixtures, fittings and any other data shown are an approximate interpretation for illustrative purposes only and are not to scale. No responsibility is taken for any error, omission, misstatement or use of data shown. Floor plan by www.bestangle.co.uk

Victoria Rise, Hilgrove Road, Swiss Cottage, London, NW6

Weekly Rental Of £1,900



Call 020 7759 2199 to view this property, or visit www.vitaproperties.uk for more details

27 Northways Parade, College Crescent, London, NW3 5DN | T: 020 7759 2199 | E: enquiries@vitaproperties.uk
We make all efforts to ensure this information is accurate, but we can't guarantee it.