

Golders Green Road, Golders Green, London NW11

Weekly Rental Of £400



This spacious one-bedroom sixth floor flat in Golders Green, London, offers modern living with a balcony, refurbished kitchen, wooden floors, lift access and communal garden. The balcony boasts charming views over the London skyline and oozes with natural light. The flat also benefits from a lift taking you directly to the landing of the sixth floor, providing convenience and ease of access. Inside is a refurbished kitchen complete with all the expected amenities, as well as a breakfast bar. The wooden floors and neutral decor create a bright, airy feel throughout the flat and the shared communal garden is a great place to meet friends and spend the summer months outdoors. Available now

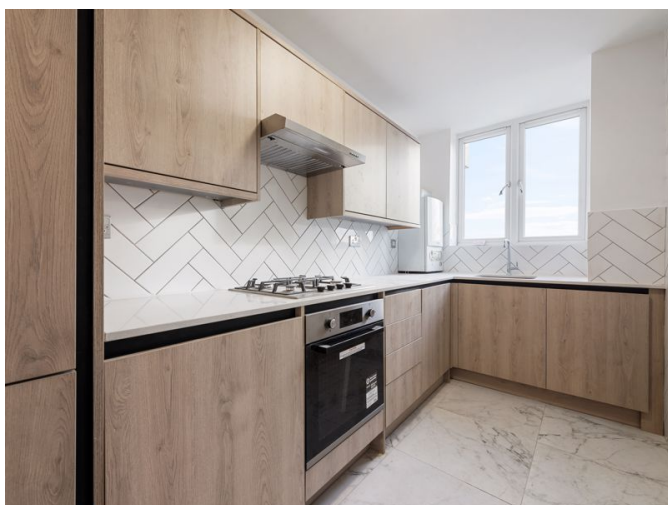
- Lift
- Parking
- Close to Brent Cross station and shops on Golders Green Road
- Communal Gardens
- Updated Kitchen and Flooring
- Available now

Call 020 7759 2199 to view this property, or visit www.vitaproperties.uk for more details

27 Northways Parade, College Crescent, London, NW3 5DN | T: 020 7759 2199 | E: enquiries@vitaproperties.uk
We make all efforts to ensure this information is accurate, but we can't guarantee it.

Golders Green Road, Golders Green, London NW11

Weekly Rental Of £400



Call 020 7759 2199 to view this property, or visit www.vitaproperties.uk for more details

27 Northways Parade, College Crescent, London, NW3 5DN | T: 020 7759 2199 | E: enquiries@vitaproperties.uk
We make all efforts to ensure this information is accurate, but we can't guarantee it.

Golders Green Road, Golders Green, London NW11

Weekly Rental Of £400



Call 020 7759 2199 to view this property, or visit www.vitaproperties.uk for more details

27 Northways Parade, College Crescent, London, NW3 5DN | T: 020 7759 2199 | E: enquiries@vitaproperties.uk
We make all efforts to ensure this information is accurate, but we can't guarantee it.

Golders Green Road, Golders Green, London NW11

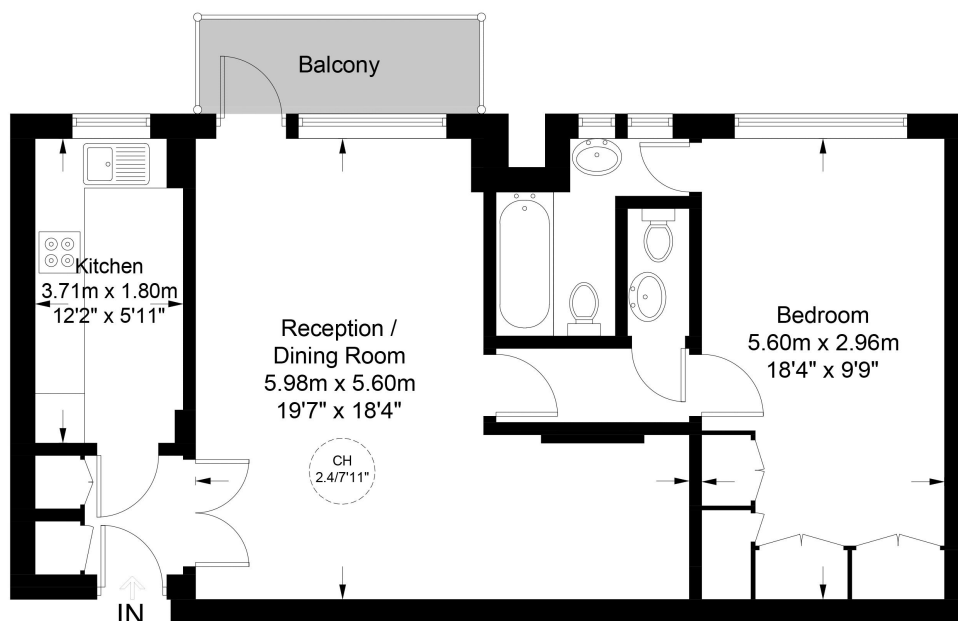
Weekly Rental Of £400



Melvin Hall NW11 9QB



Approximate Gross Internal Area = 655 sq ft / 60.9 sq m



Sixth Floor



**Certified
Property
Measurer**

This plan is for layout guidance only. Not drawn to scale unless stated. Windows and door openings are approximate. Whilst every care is taken in the preparation of this plan, please check all dimensions, shapes and compass bearings before making any decisions reliant upon them. (ID928777)

Call 020 7759 2199 to view this property, or visit www.vitaproperties.uk for more details

27 Northways Parade, College Crescent, London, NW3 5DN | T: 020 7759 2199 | E: enquiries@vitaproperties.uk
We make all efforts to ensure this information is accurate, but we can't guarantee it.