

The Yoo Building, 17 Hall Road, St Johns Wood, London NW8

Weekly Rental Of £1,195



This chic and stylish two-bedroom, two-bathroom residence is located in the highly-sought-after Yoo Building in St Johns Wood, NW8. Designed by renowned architect Phillip Stark, the apartment is a model of modern design and high-end luxury, featuring floor-to-ceiling windows, a sleek, contemporary kitchen and generous, open-plan living spaces. Residents benefit from excellent on-site amenities, including a 24-hour concierge, passenger lift and secure off street parking (one vehicle). The area offers a plethora of bars, restaurants and boutiques, and is close to the amenities of both Little Venice and St Johns Wood and the tranquil green spaces of Regents Park.

- Desirable Location
- Architecturally Designed
- Floor-To-Ceiling Windows
- Modern
- Spacious
- Lift
- 24 hr Concierge

Call 020 7759 2199 to view this property, or visit www.vitaproperties.uk for more details

27 Northways Parade, College Crescent, London, NW3 5DN | T: 020 7759 2199 | E: enquiries@vitaproperties.uk
We make all efforts to ensure this information is accurate, but we can't guarantee it.

The Yoo Building, 17 Hall Road, St Johns Wood, London NW8

Weekly Rental Of £1,195



Call 020 7759 2199 to view this property, or visit www.vitaproperties.uk for more details

27 Northways Parade, College Crescent, London, NW3 5DN | T: 020 7759 2199 | E: enquiries@vitaproperties.uk
We make all efforts to ensure this information is accurate, but we can't guarantee it.

The Yoo Building, 17 Hall Road, St Johns Wood, London NW8

Weekly Rental Of £1,195



Call 020 7759 2199 to view this property, or visit www.vitaproperties.uk for more details

27 Northways Parade, College Crescent, London, NW3 5DN | T: 020 7759 2199 | E: enquiries@vitaproperties.uk
We make all efforts to ensure this information is accurate, but we can't guarantee it.

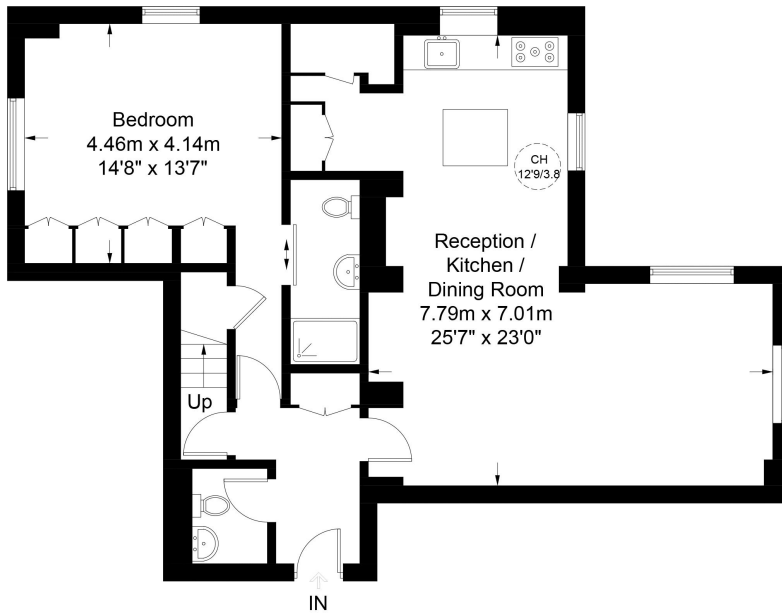
The Yoo Building, 17 Hall Road, St Johns Wood, London NW8

Weekly Rental Of £1,195

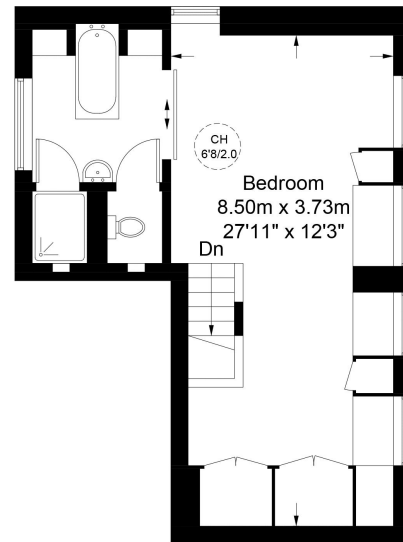


The Yoo Building, NW8

Approximate Gross Internal Area = 1312 sq ft / 121.9 sq m



Third Floor



Mezzanine



This plan is for layout guidance only. Not drawn to scale unless stated. Windows and door openings are approximate. Whilst every care is taken in the preparation of this plan, please check all dimensions, shapes and compass bearings before making any decisions reliant upon them. (ID927796)

Call 020 7759 2199 to view this property, or visit www.vitaproperties.uk for more details

27 Northways Parade, College Crescent, London, NW3 5DN | T: 020 7759 2199 | E: enquiries@vitaproperties.uk
We make all efforts to ensure this information is accurate, but we can't guarantee it.

Energy efficiency rating for this property

This property's current energy rating is C. It has the potential to be C.

[See how to improve this property's energy performance.](#)

Score	Energy rating	Current	Potential
92+	A		
81-91	B		
69-80	C	79 c	80 c
55-68	D		
39-54	E		
21-38	F		
1-20	G		