

Frognal, Hampstead, London NW3

Weekly Rental Of £3,250



A beautiful three bedroom cottage set over two floors is situated in this prime location within walking distance to Hampstead Village. The property has beautiful wooden flooring in the entrance hall and has been refurbished to a high standard. Accommodation is comprised of: Ground - reception room, fully fitted kitchen with breakfast bar, guest cloakroom; First floor - double bedroom with en suite shower room & fitted wardrobes, double bedroom with fitted wardrobes, single bedroom with fitted wardrobes. Offered Furnished/unfurnished

- Modern
- Recently Refurbished
- Cottage Style House
- Gated
- Moments to Hampstead High Street and Tube
- Prime Location

Call 020 7759 2199 to view this property, or visit www.vitaproperties.uk for more details

27 Northways Parade, College Crescent, London, NW3 5DN | T: 020 7759 2199 | E: enquiries@vitaproperties.uk
We make all efforts to ensure this information is accurate, but we can't guarantee it.

Frognal, Hampstead, London NW3

Weekly Rental Of £3,250



Call 020 7759 2199 to view this property, or visit www.vitaproperties.uk for more details

27 Northways Parade, College Crescent, London, NW3 5DN | T: 020 7759 2199 | E: enquiries@vitaproperties.uk
We make all efforts to ensure this information is accurate, but we can't guarantee it.

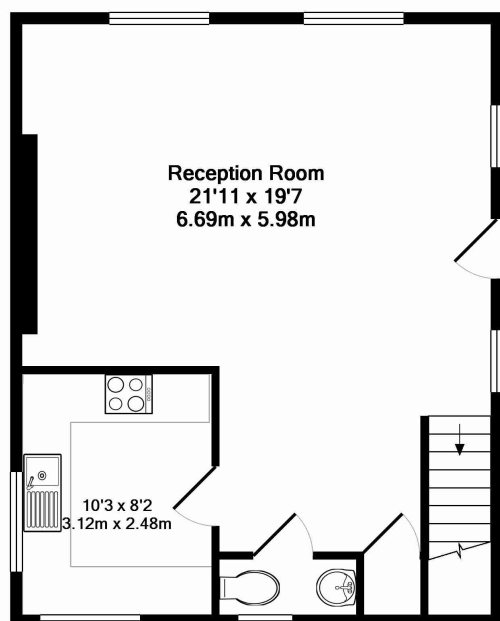
Frognal, Hampstead, London NW3

Weekly Rental Of £3,250

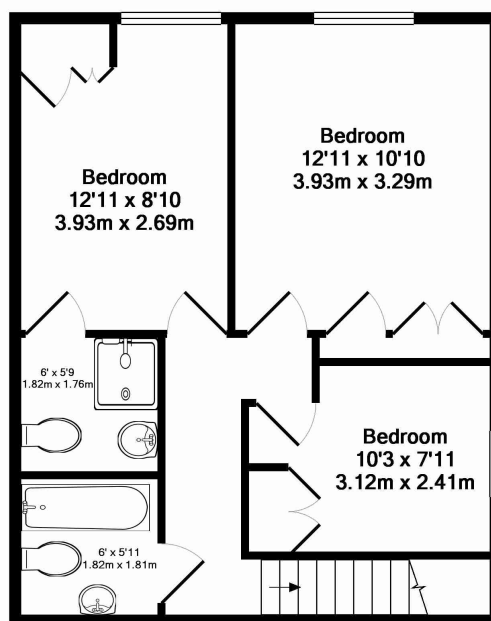


Call 020 7759 2199 to view this property, or visit www.vitaproperties.uk for more details

27 Northways Parade, College Crescent, London, NW3 5DN | T: 020 7759 2199 | E: enquiries@vitaproperties.uk
We make all efforts to ensure this information is accurate, but we can't guarantee it.

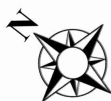


Ground Floor
Approx. Floor
Area 476 Sq.Ft.
(44.2 Sq.M.)



1st Floor
Approx. Floor
Area 483 Sq.Ft.
(44.9 Sq.M.)

Total Approx. Floor Area 958 Sq.Ft. (89.0 Sq.M.)



KeyAGENT LTD Floor Plans are produced and provided for illustration purposes only. Whilst every attempt has been made to ensure the plan is accurate and presents the property in the best way, measurements of doors, windows and rooms are approximate and no responsibility is taken for any error, omission or mis-statement. To find out more about KeyAGENT please visit www.keyagent.co.uk (Tel: 0845 475 4165)
Made with Metropix ©2012

Energy efficiency rating for this property

This property's current energy rating is C. It has the potential to be B.

[See how to improve this property's energy performance.](#)

Score	Energy rating	Current	Potential
92+	A		
81-91	B		87 B
69-80	C	70 c	
55-68	D		
39-54	E		
21-38	F		
1-20	G		