



Ideally located within a quiet cobbled mews is this superb four bedroom two bathroom 1,530 sq ft house in South Hampstead. The property has undergone a complete refurbishment throughout and benefits from a stunning fully fitted kitchen and diner, a double aspect reception room with modern lighting, four bedrooms and two bathrooms. Fairfax Place benefits from easy access to the shops, amenities and transport links of Swiss Cottage (Jubilee line) and Finchley Road (Jubilee & Metropolitan line).

- Excellent Condition
- Kitchen/Breakfast Room
- Close to Public Transport
- Wooden Floors
- 142 sq meters
- Chain free





Fairfax Place, South Hampstead, London, NW6

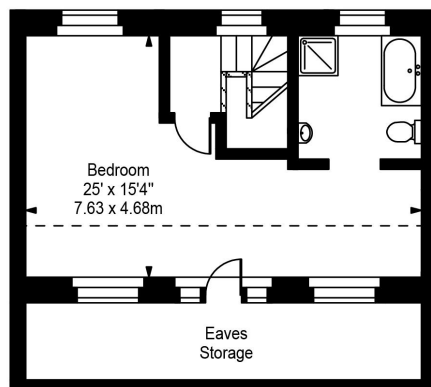
£1,300,000



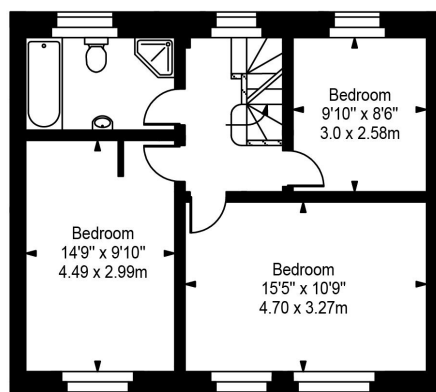
Call 020 7759 2199 to view this property, or visit www.vitaproperties.uk for more details

27 Northways Parade, College Crescent, London, NW3 5DN | T: 020 7759 2199 | E: enquiries@vitaproperties.uk
We make all efforts to ensure this information is accurate, but we can't guarantee it.

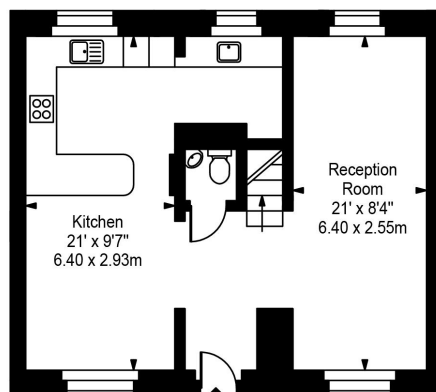
Fairfax Place



Second Floor



First Floor



Ground Floor

Approx Gross Internal Area **1530 Sq Ft - 142.17 Sq M**
(Excluding Eaves Storage)

For Illustration Purposes Only - Not To Scale
Floor plan by www.creativeplanettk.com