



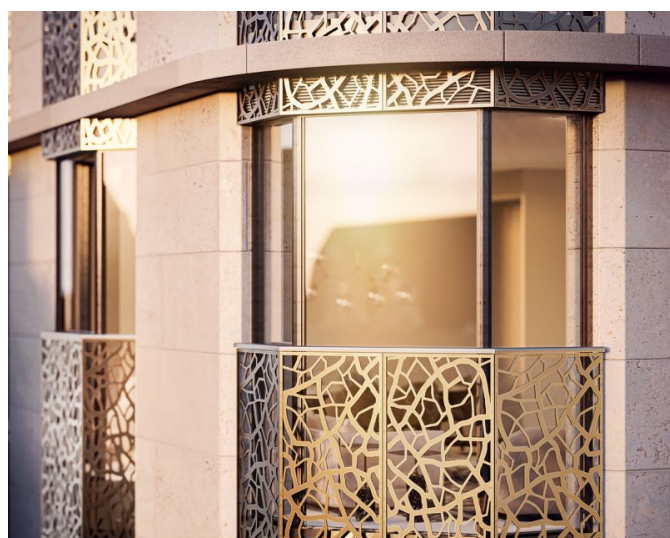
Designed from the inside out, and with an enviable central London location, W1 Place is perfect for the discerning individual, the professional couple and the modern family. The highly crafted quality throughout the building means you'll be feeling that reassuring click with every door you close, and the satisfying sound of your feet on the oak floor. Light pours in through the floor-to-ceiling bay windows, creating a sense of both openness and warmth, while the open-plan living and kitchen areas provide a thoroughly modern space to host your friends or enjoy a cosy night in. The selection of one, two and three-bed layouts provide luxurious living, designed with you at the heart. The 37 unit scheme will include a selection of one, two and three bedroom luxury residences with South, West and East Facing views. All apartments come with generously proportioned open plan living and kitchen areas framed by the floor-to-ceiling bay windows, ensuring a wealth of natural light and a view over the famed street. The exterior boasts a bright, natural limestone façade coupled with bronze-coloured French windows. Inspired by the distinctive glaze of Japanese porcelain, the building's balustrades introduce additional artistic flair and texture as well as frame the windows from the outside in. The nearest tube stations are Great Portland Street (3 min walk), Regents Park (4 min) and Warren Street (6 min). **Images are for Marketing Purposes Only**

Leasehold: 900 Years Estimated Service Charge: £7.00/Sq Ft per annum Ground Rent: 1 beds: £750.00 2 beds: £1,250.00 3 beds: £1,500.00 Estimated Completion: Q3/ Q4 2023

- Natural stone walls façade
- Floor to ceiling bay windows
- Juliette balconies with bespoke cast aluminium balustrades
- Triple glazed aluminium windows
- Natural light throughout
- 24 Hour Concierge

W1 Place, Great Portland Street, London W1W

£2,565,000



Call 020 7759 2199 to view this property, or visit www.vitaproperties.uk for more details

27 Northways Parade, College Crescent, London, NW3 5DN | T: 020 7759 2199 | E: enquiries@vitaproperties.uk
We make all efforts to ensure this information is accurate, but we can't guarantee it.

W1 Place, Great Portland Street, London W1W
£2,565,000



Call 020 7759 2199 to view this property, or visit www.vitaproperties.uk for more details

27 Northways Parade, College Crescent, London, NW3 5DN | T: 020 7759 2199 | E: enquiries@vitaproperties.uk
We make all efforts to ensure this information is accurate, but we can't guarantee it.