

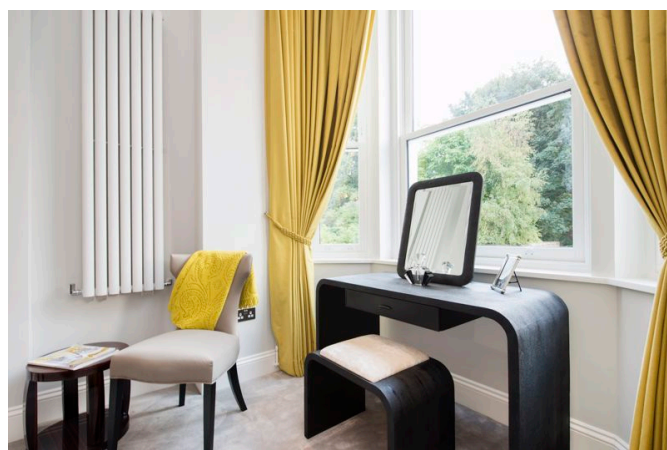
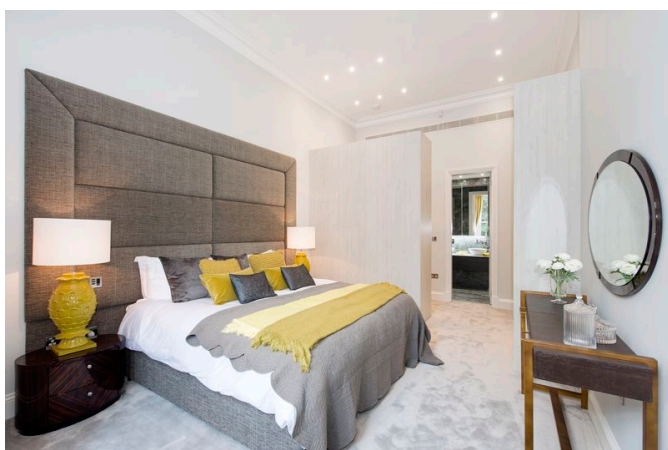
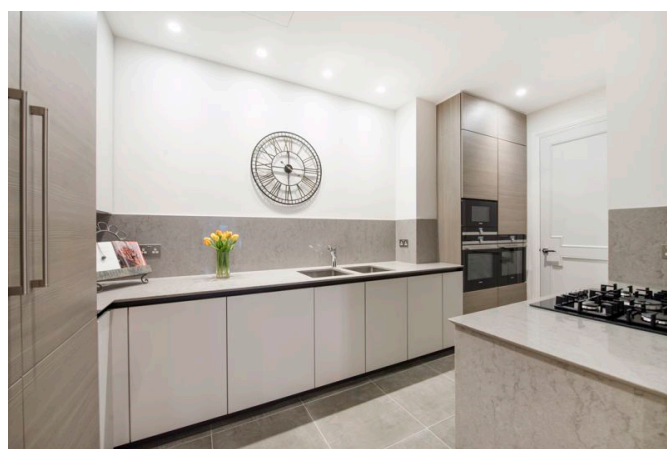
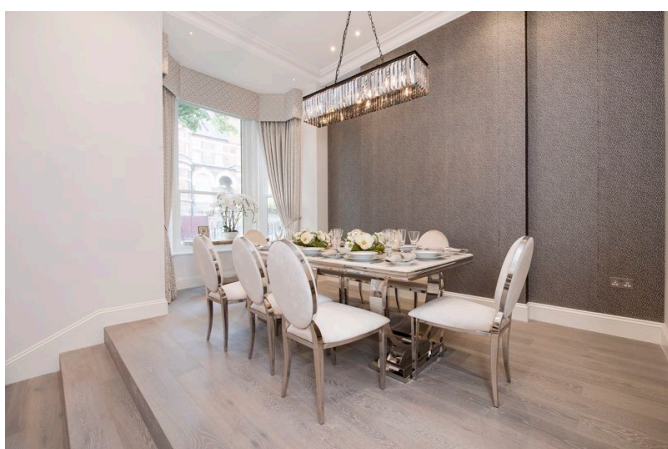


A beautifully presented ground floor apartment of this stunning property on Arkwright Road. This property comprises of three bedrooms, one reception room, one dining room and three bathrooms including two en suites and one WC. The property is a close walk to the stylish boutiques, shops and food stores of Hampstead Village benefiting from the surrounding parks and open spaces.

- Pet Friendly
- 3 Bedrooms
- 3 Bathrooms
- Allocated Parking Space
- Excellent Location
- Available Asap

# Arkwright Road, Hampstead, London, NW3

Weekly Rental Of £2,450



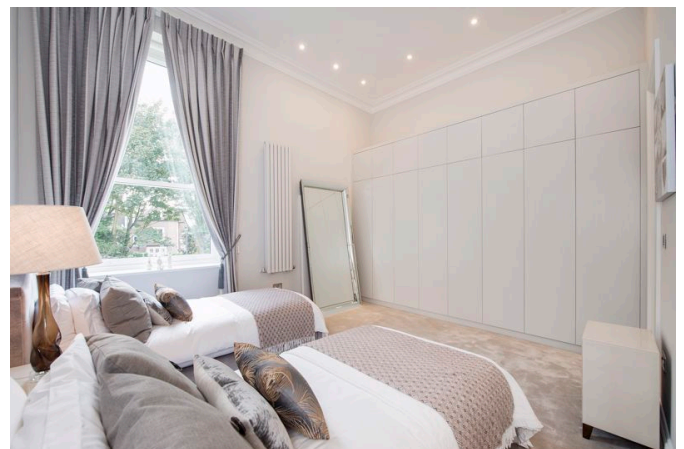
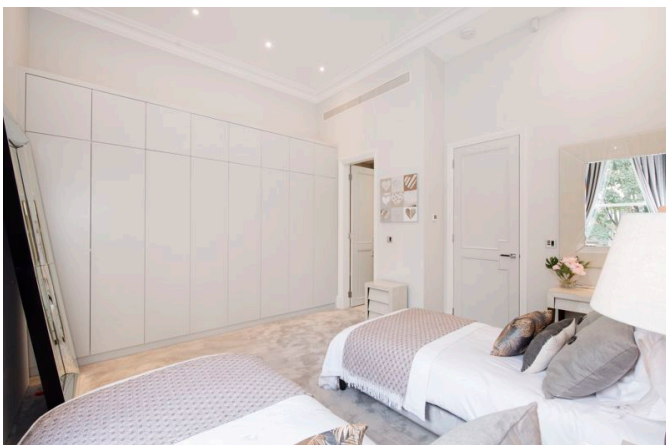
Call 020 7759 2199 to view this property, or visit [www.vitaproperties.uk](http://www.vitaproperties.uk) for more details

27 Northways Parade, College Crescent, London, NW3 5DN | T: 020 7759 2199 | E: [enquiries@vitaproperties.uk](mailto:enquiries@vitaproperties.uk)  
We make all efforts to ensure this information is accurate, but we can't guarantee it.



# Arkwright Road, Hampstead, London, NW3

Weekly Rental Of £2,450



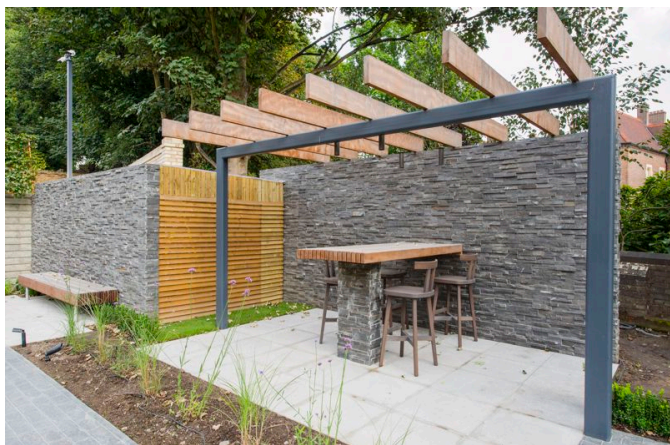
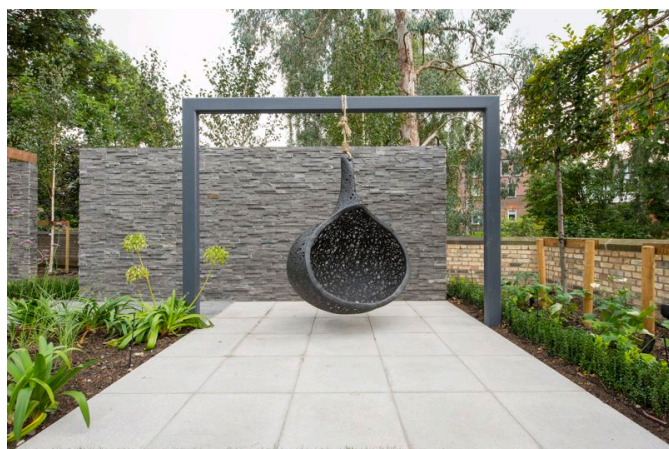
Call 020 7759 2199 to view this property, or visit [www.vitaproperties.uk](http://www.vitaproperties.uk) for more details

27 Northways Parade, College Crescent, London, NW3 5DN | T: 020 7759 2199 | E: [enquiries@vitaproperties.uk](mailto:enquiries@vitaproperties.uk)  
We make all efforts to ensure this information is accurate, but we can't guarantee it.



# Arkwright Road, Hampstead, London, NW3

Weekly Rental Of £2,450

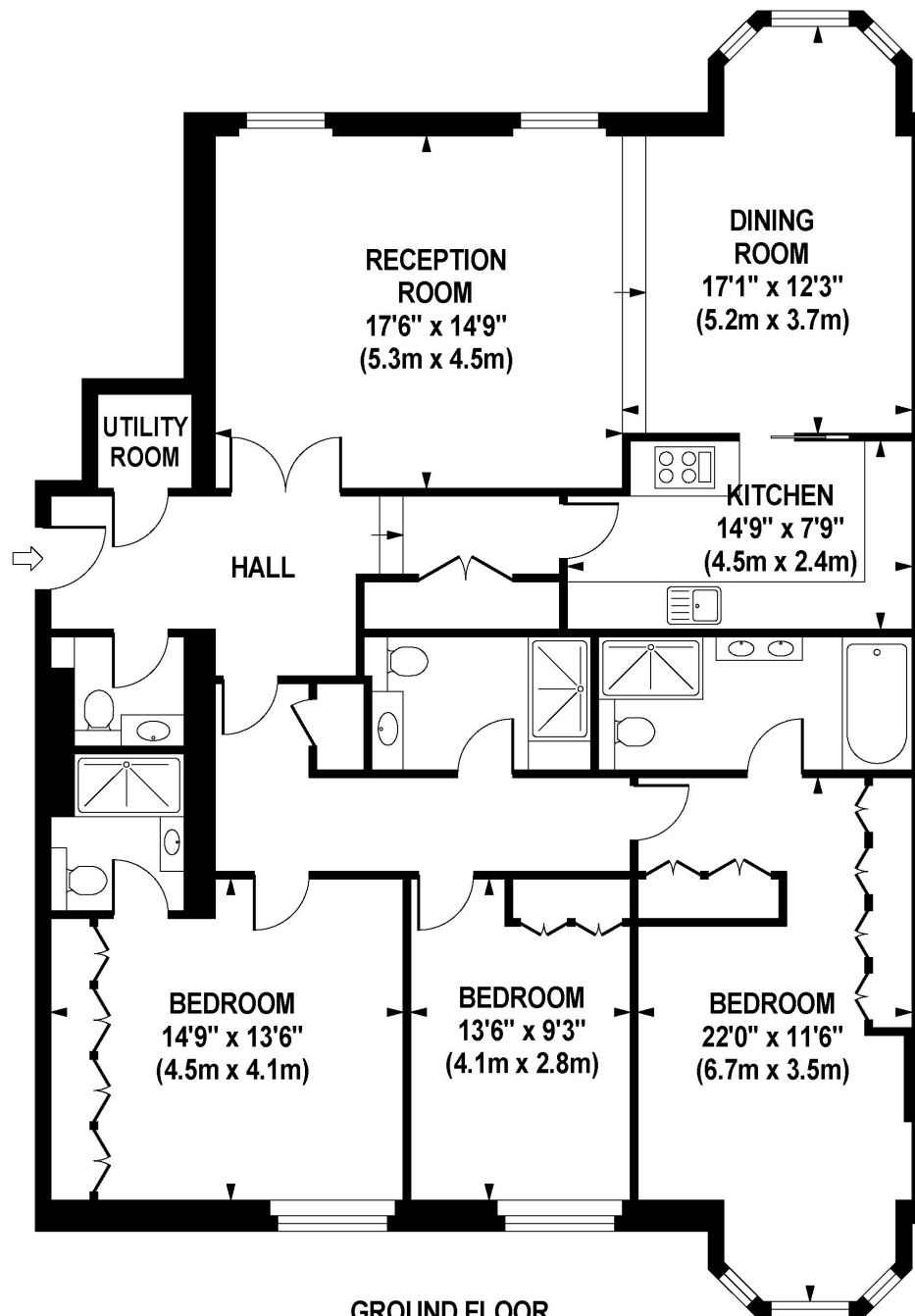


Call 020 7759 2199 to view this property, or visit [www.vitaproperties.uk](http://www.vitaproperties.uk) for more details

27 Northways Parade, College Crescent, London, NW3 5DN | T: 020 7759 2199 | E: [enquiries@vitaproperties.uk](mailto:enquiries@vitaproperties.uk)  
We make all efforts to ensure this information is accurate, but we can't guarantee it.

**ARKWRIGHT ROAD**

Approximate Gross Internal Area 1588 sq ft / 147.5 sq m



**GROUND FLOOR  
GROSS INTERNAL  
FLOOR AREA 1588 SQ FT**

Although every attempt has been made to ensure accuracy, all measurements are approximate.  
The floor plan's for illustrative purposes only and not to scale. Measured in accordance to RICS standards.

DE-PHOTOGRAPHY.NET

