

# Adelaide Road, Swiss Cottage, London, NW3

£1,000,000



We are delighted to offer this exquisite recently refurbished interior designed apartment in the heart of Swiss Cottage. The south facing second floor apartment of a 1930's portered mansion block that features an ample amount of natural light and boasting over 1300 sq ft has very recently gone through a complete renovation with modern fixtures and fittings. Comprising of a large double aspect living room, high-spec bespoke german kitchen/diner, three double bedrooms with fitted wardrobes, italian family bathroom, shower room and guest cloak room. The property is located on the borders of St Johns Wood and Swiss cottage, benefiting from short walk to Primrose Hill and trendy St Johns Wood High Street. The property also provides great storage throughout, fantastic transport links and convenience of local amenities of Swiss Cottage and Finchley Road.

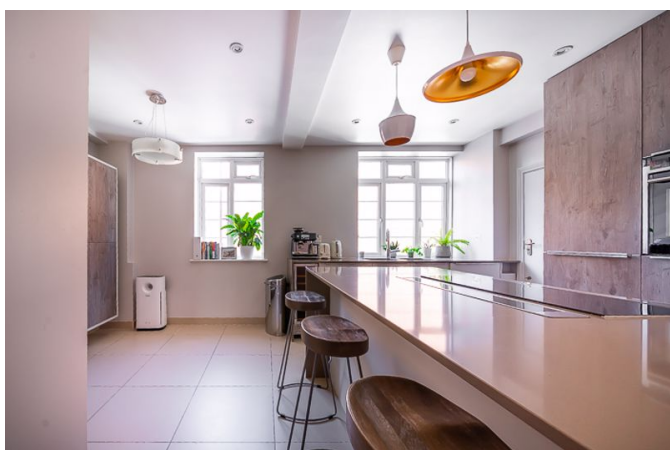
- South facing
- Interior designed
- Close to St Johns Wood High Street & Swiss Cottage Tube
- Portered mansion block
- Three double bedrooms - Two bathrooms
- Long Lease

Call 020 7759 2199 to view this property, or visit [www.vitaproperties.uk](http://www.vitaproperties.uk) for more details

27 Northways Parade, College Crescent, London, NW3 5DN | T: 020 7759 2199 | E: [enquiries@vitaproperties.uk](mailto:enquiries@vitaproperties.uk)  
We make all efforts to ensure this information is accurate, but we can't guarantee it.

# Adelaide Road, Swiss Cottage, London, NW3

£1,000,000



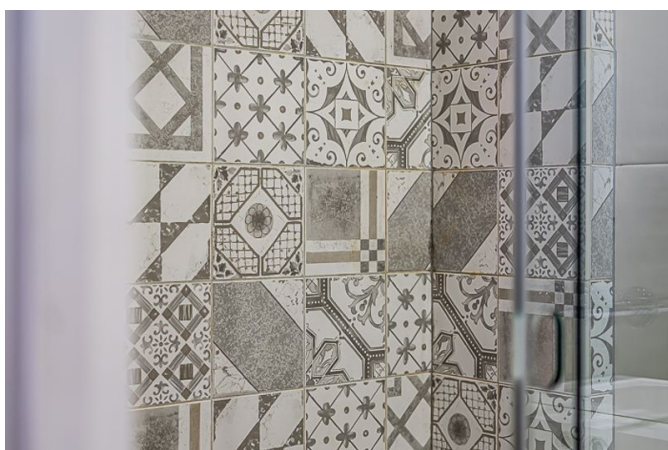
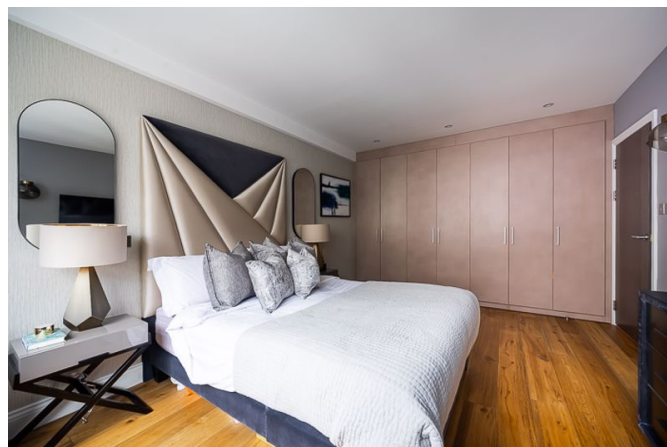
Call 020 7759 2199 to view this property, or visit [www.vitaproperties.uk](http://www.vitaproperties.uk) for more details

27 Northways Parade, College Crescent, London, NW3 5DN | T: 020 7759 2199 | E: [enquiries@vitaproperties.uk](mailto:enquiries@vitaproperties.uk)  
We make all efforts to ensure this information is accurate, but we can't guarantee it.



# Adelaide Road, Swiss Cottage, London, NW3

£1,000,000



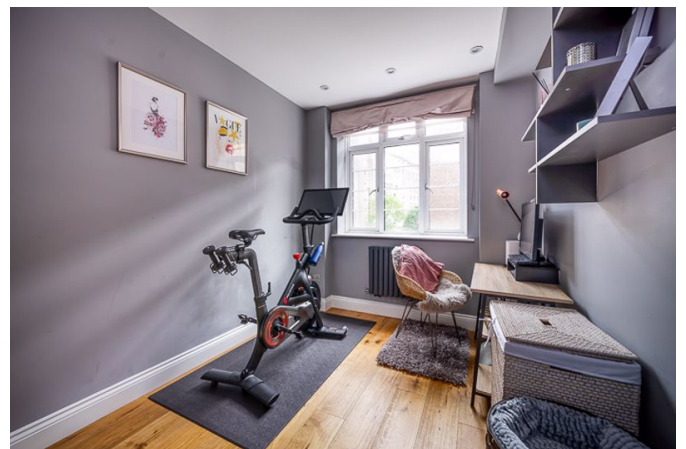
Call 020 7759 2199 to view this property, or visit [www.vitaproperties.uk](http://www.vitaproperties.uk) for more details

27 Northways Parade, College Crescent, London, NW3 5DN | T: 020 7759 2199 | E: [enquiries@vitaproperties.uk](mailto:enquiries@vitaproperties.uk)  
We make all efforts to ensure this information is accurate, but we can't guarantee it.



# Adelaide Road, Swiss Cottage, London, NW3

£1,000,000



Call 020 7759 2199 to view this property, or visit [www.vitaproperties.uk](http://www.vitaproperties.uk) for more details

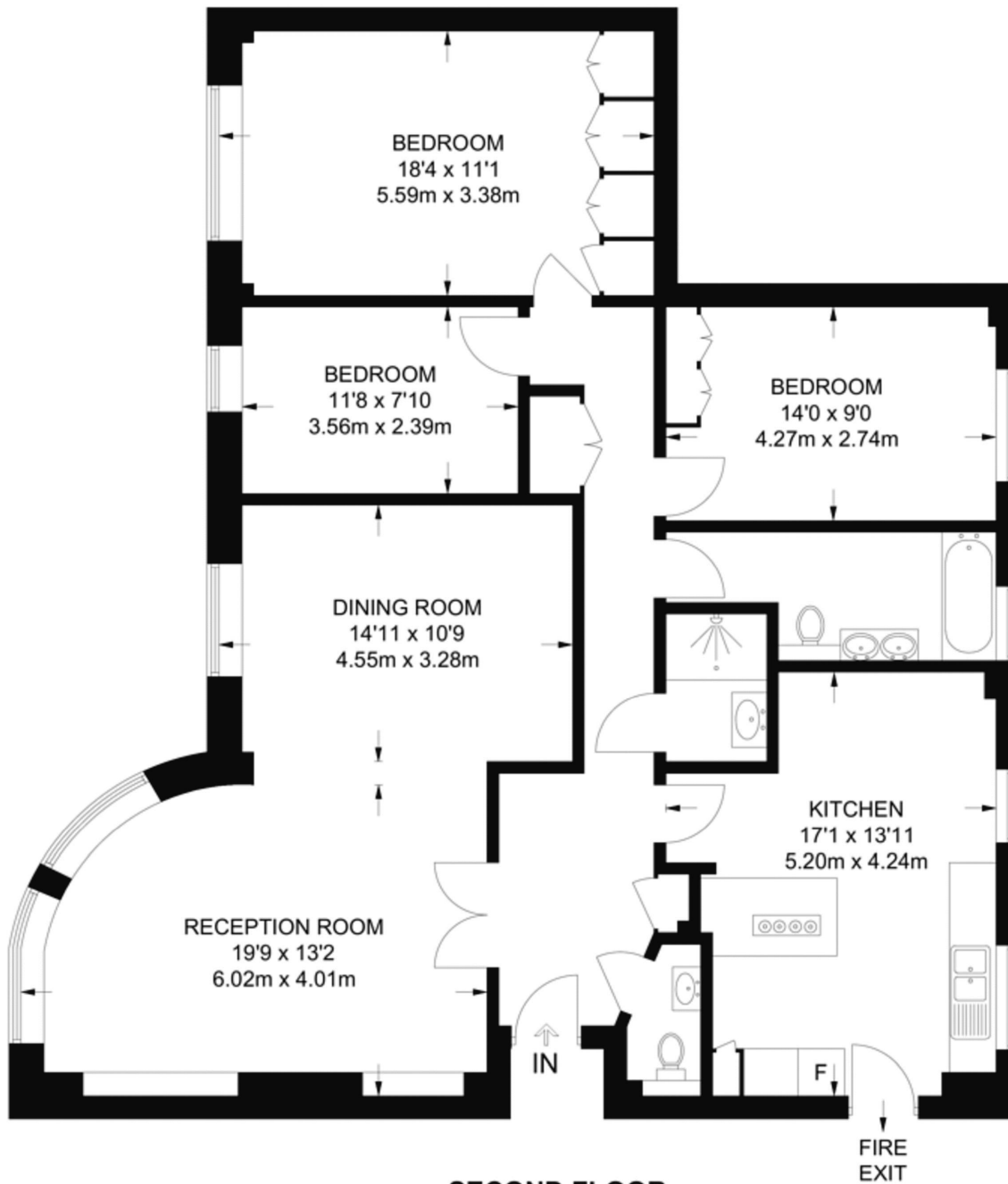
27 Northways Parade, College Crescent, London, NW3 5DN | T: 020 7759 2199 | E: [enquiries@vitaproperties.uk](mailto:enquiries@vitaproperties.uk)  
We make all efforts to ensure this information is accurate, but we can't guarantee it.

# Adelaide Road, Swiss Cottage, London, NW3

£1,000,000



APPROXIMATE FLOOR AREA = 1373 SQ FT / 127.6 SQ M  
INCLUDING LIMITED USE AREA (31 SQ FT / 2.9 SQ M)



Surveyed and drawn in accordance with the International Property Measurement Standards (IPMS 2: Residential)

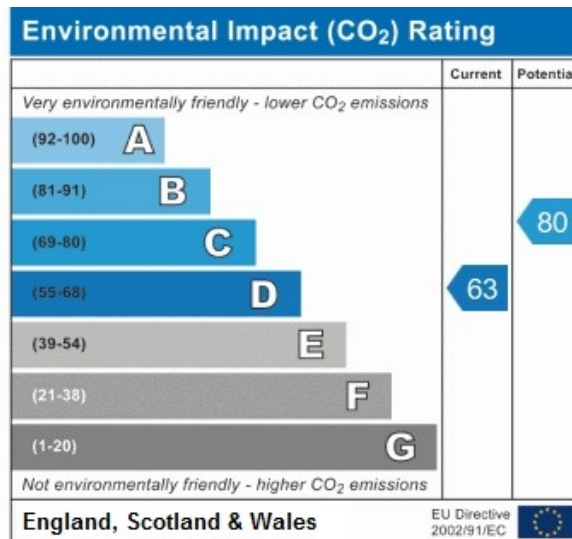
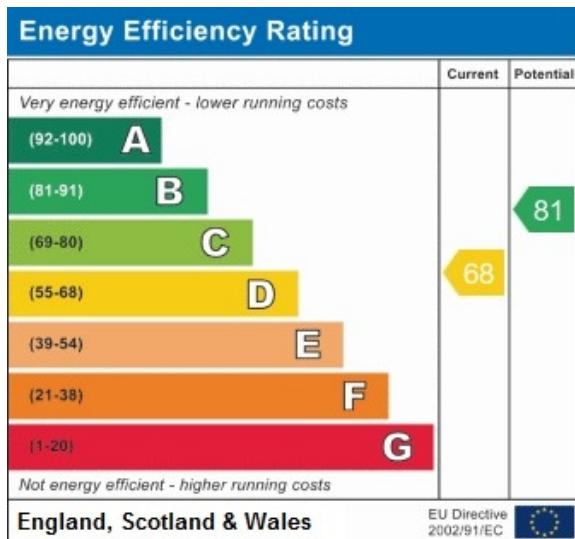


Call 020 7759 2199 to view this property, or visit [www.vitaproperties.uk](http://www.vitaproperties.uk) for more details

27 Northways Parade, College Crescent, London, NW3 5DN | T: 020 7759 2199 | E: [enquiries@vitaproperties.uk](mailto:enquiries@vitaproperties.uk)  
We make all efforts to ensure this information is accurate, but we can't guarantee it.

# Adelaide Road, Swiss Cottage, London, NW3

£1,000,000



Call 020 7759 2199 to view this property, or visit [www.vitaproperties.uk](http://www.vitaproperties.uk) for more details

27 Northways Parade, College Crescent, London, NW3 5DN | T: 020 7759 2199 | E: [enquiries@vitaproperties.uk](mailto:enquiries@vitaproperties.uk)  
We make all efforts to ensure this information is accurate, but we can't guarantee it.