



Presenting a modern studio flat available in Dinerman Court, Boundary Road, NW8. Set on the first floor (Lift) this quaint studio apartment offers a contemporary kitchen with sleek white units and fully integrated appliances, a well-proportioned living space and bathroom. This lovely, light-flooded apartment offers gorgeous wood floors, spot-lighting and high quality furnishings throughout. Further benefits off street gated parking. Ideally situated for local transport links from South Hampstead Station (Overground) being a mere three minute walk away, as well as a large array of local shops, bars and other amenities.

- Studio Apartment
- Further benefits off street gated parking
- Excellent Local Transport Links
- Modern Finish
- Furnished
- Available Now
- Managed

Boundary Road, St Johns Wood, London NW8

Weekly Rental Of £375



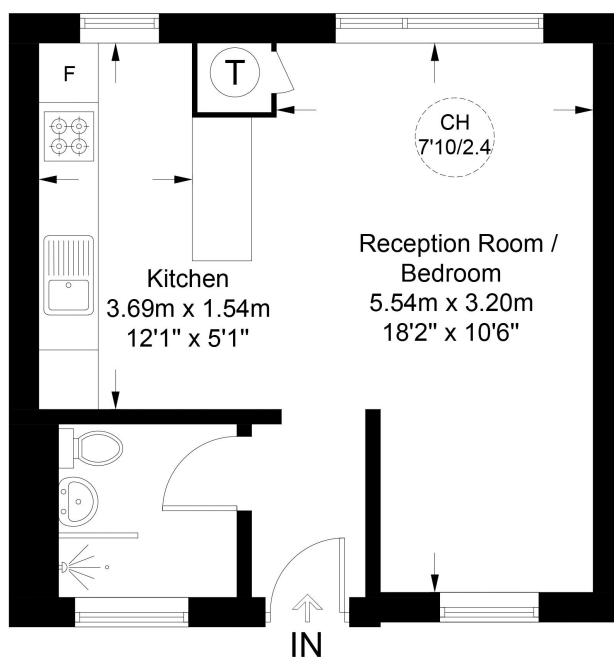
Call 020 7759 2199 to view this property, or visit www.vitaproperties.uk for more details

27 Northways Parade, College Crescent, London, NW3 5DN | T: 020 7759 2199 | E: enquiries@vitaproperties.uk
We make all efforts to ensure this information is accurate, but we can't guarantee it.



Dinerman Court, NW8

Approximate Gross Internal Area = 338 sq ft / 31.4 sq m

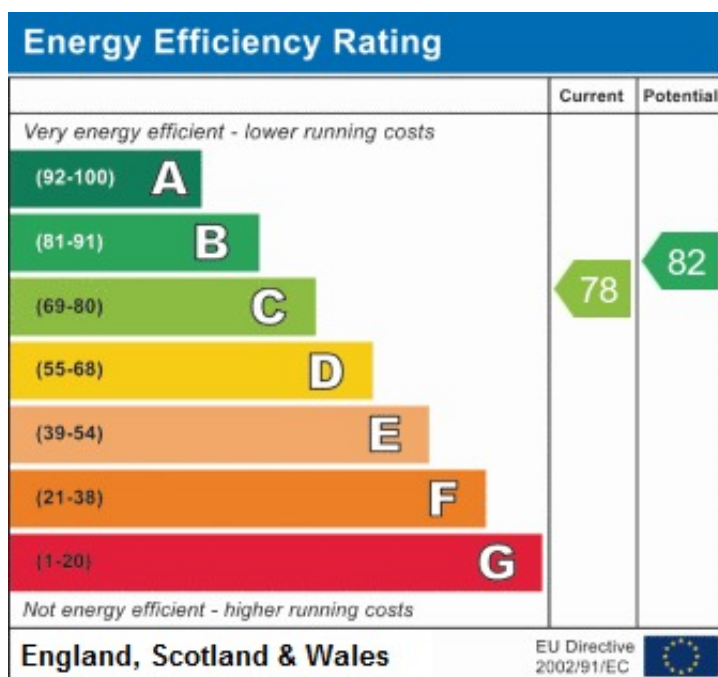


First Floor

This plan is for layout guidance only. Not drawn to scale unless stated. Windows and door openings are approximate. Whilst every care is taken in the preparation of this plan, please check all dimensions, shapes and compass bearings before making any decisions reliant upon them. (ID772943)

Boundary Road, St Johns Wood, London NW8

Weekly Rental Of £375



Call 020 7759 2199 to view this property, or visit www.vitaproperties.uk for more details

27 Northways Parade, College Crescent, London, NW3 5DN | T: 020 7759 2199 | E: enquiries@vitaproperties.uk
We make all efforts to ensure this information is accurate, but we can't guarantee it.