

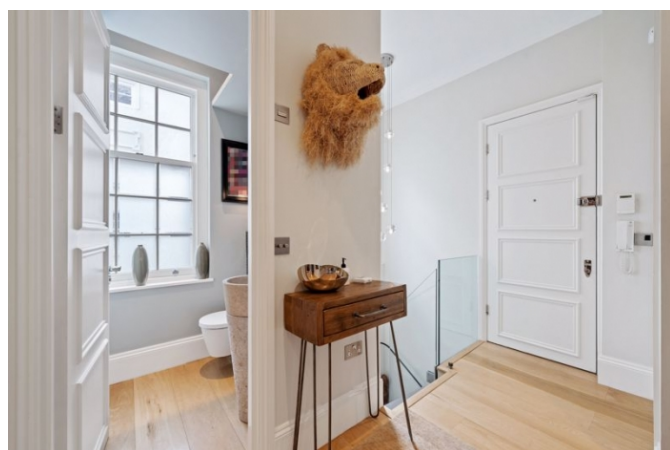
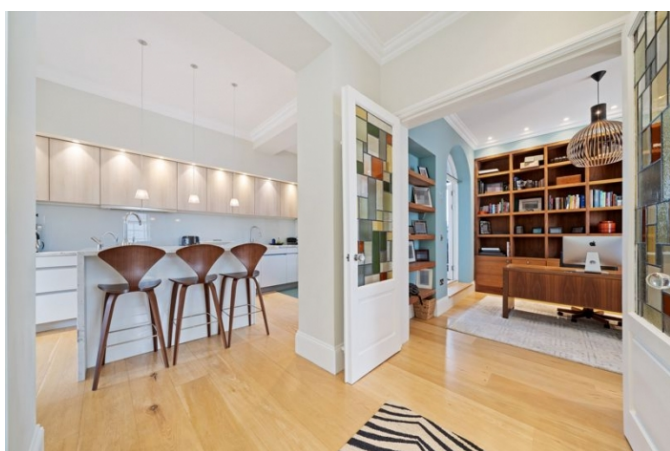


A rare opportunity to acquire a beautiful three bedroom, split-level maisonette with direct views across Primrose Hill. Comprising a grand reception room with large, light-enhancing windows and an original feature fireplace, a modern kitchen with carrera marble counters and breakfast bar leading onto a fabulous dining area. An incredible master bedroom with its own dressing area, a vast three-piece ensuite bathroom with 'his and her' sinks and access onto a small private patio area. Further, a large double bedroom with built-in wardrobes, one single bedroom, a large family bathroom, fully-equipped study, useful utility room and separate WC. This beautifully presented property boasts many charming features, including mosaic tiled doors, high ceilings and lovely hardwood floors which run throughout the property. Residents of Park House can also enjoy the use of a large communal roof terrace and all the benefits of its enviable location, being directly opposite the beautiful greenery of Primrose Hill and all the nearby boutiques, shops, cafés and restaurants.

- Split Level Property
- Three Bedrooms
- Communal Roof Terrace with Views Across London and onto Primrose Hill
- Private Patio
- Modern Throughout
- Share of Freehold with a Long Lease

# Regents Park Road, Primrose Hill, London NW1

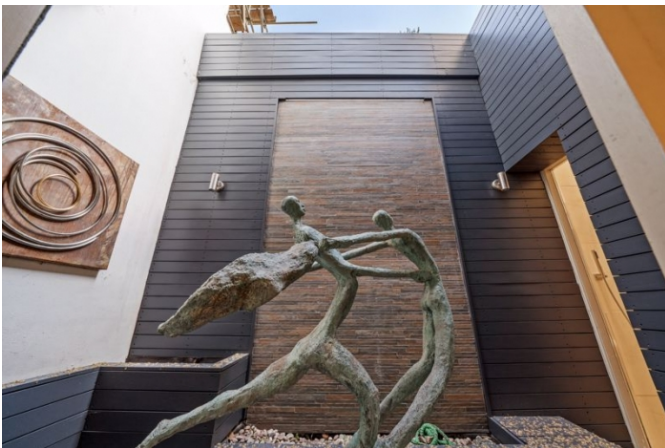
£2,950,000



Call 020 7759 2199 to view this property, or visit [www.vitaproperties.uk](http://www.vitaproperties.uk) for more details

27 Northways Parade, College Crescent, London, NW3 5DN | T: 020 7759 2199 | E: [enquiries@vitaproperties.uk](mailto:enquiries@vitaproperties.uk)  
We make all efforts to ensure this information is accurate, but we can't guarantee it.











## Primrose Hill, NW1

Approximate Gross Internal Area = 1928 sq ft / 179.1 sq m  
(Excluding Communal Roof Terrace)



This plan is for layout guidance only. Not drawn to scale unless stated. Windows and door openings are approximate. Whilst every care is taken in the preparation of this plan, please check all dimensions, shapes and compass bearings before making any decisions reliant upon them. (ID739871)

