

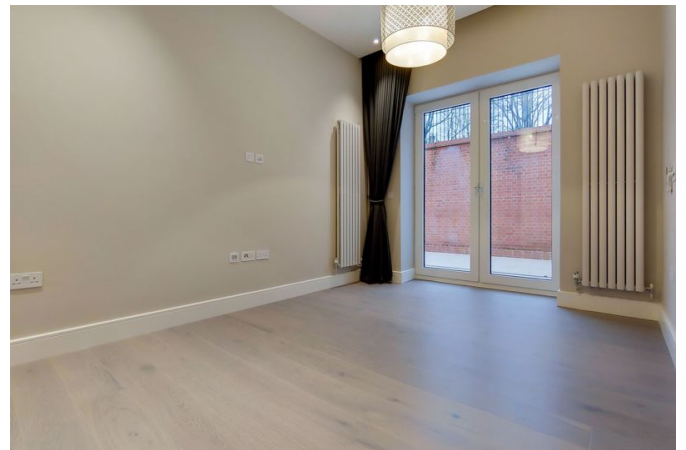
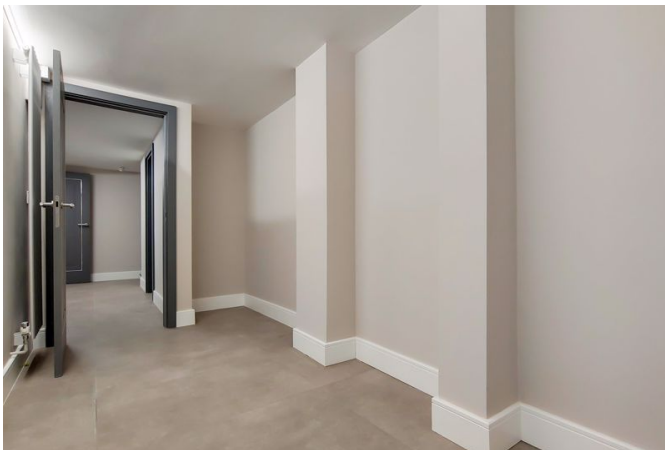
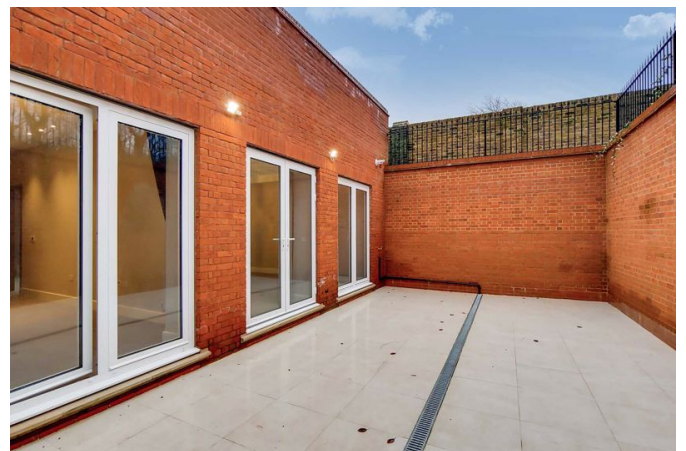


Available 13 January 2023 - Presenting a selection of one, two, three and four bed apartments, set within the excited new period conversion set on the beautiful, tree-lined street Fitzjohns Avenue, NW3. This brand new conversion boasts an incredible finish to each property, top-notch fixtures and fittings and many offering private terraces/ balconies. Each property boast wood floors throughout, large windows, integrated kitchen appliances and fully-tiled bathrooms. All apartments are offered on either a furnished or unfurnished basis, and all furnishings are of a great standard. Based within walking distance to the many amenities of Hampstead High Street, Finchley Road and with excellent transport links via the Jubilee line

- Large Private Patio
- High Spec
- Moments to Hampstead, Belsize Village and Swiss Cottage
- Communal Gardens
- Managed
- Available immediately
- Offered on a Furnished or Unfurnished basis

# Fitzjohns Avenue, Hampstead, London NW3

Weekly Rental Of £1,350



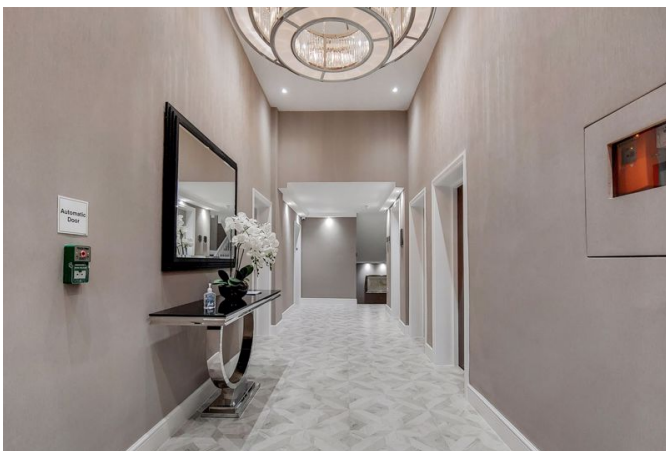
Call 020 7759 2199 to view this property, or visit [www.vitaproperties.uk](http://www.vitaproperties.uk) for more details

27 Northways Parade, College Crescent, London, NW3 5DN | T: 020 7759 2199 | E: [enquiries@vitaproperties.uk](mailto:enquiries@vitaproperties.uk)  
We make all efforts to ensure this information is accurate, but we can't guarantee it.



# Fitzjohns Avenue, Hampstead, London NW3

Weekly Rental Of £1,350

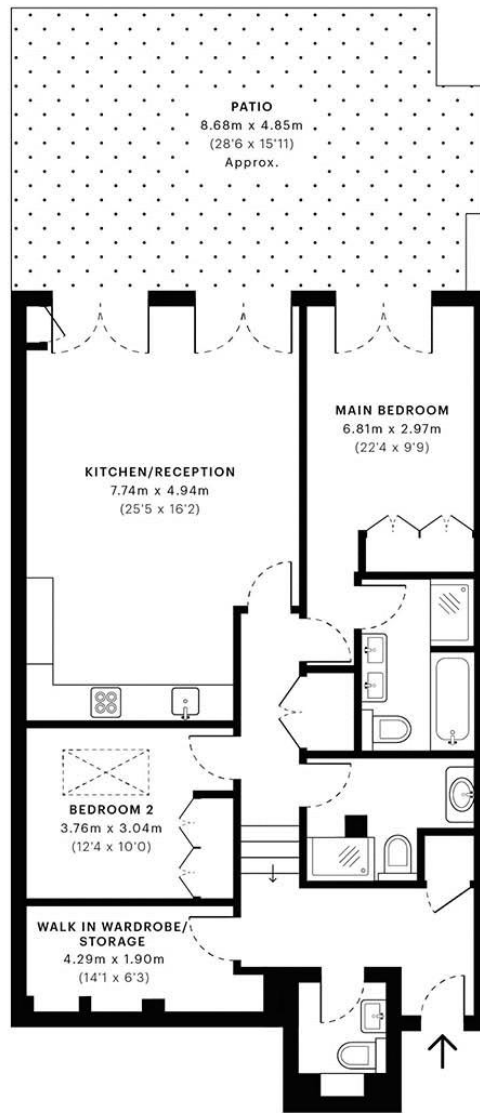


Call 020 7759 2199 to view this property, or visit [www.vitaproperties.uk](http://www.vitaproperties.uk) for more details

27 Northways Parade, College Crescent, London, NW3 5DN | T: 020 7759 2199 | E: [enquiries@vitaproperties.uk](mailto:enquiries@vitaproperties.uk)  
We make all efforts to ensure this information is accurate, but we can't guarantee it.

# Fitzjohns Avenue, Hampstead, London NW3

Weekly Rental Of £1,350



— Lower Ground Floor

**GROSS INTERNAL AREA (GIA)**  
The footprint of the property  
104.64 sqm / 1126.34 sqft

**NET INTERNAL AREA (NIA)**  
Excludes walls and external features  
Includes washrooms, restricted head height  
97.15 sqm / 1045.71 sqft

**EXTERNAL STRUCTURAL FEATURES**  
Balconies, terraces, verandas etc.  
0.00 sqm / 0.00 sqft

**RESTRICTED HEAD HEIGHT**  
Limited use area under 1.5m  
0.00 sqm / 0.00 sqft



Spec Verified floor plans are produced in accordance with Royal Institution of Chartered Surveyors' Property Measurement Standards. Plots and gardens are illustrative only and excluded from all area calculations. Due to rounding, numbers may not add up precisely. All measurements shown for the individual room lengths and widths are the maximum points of measurements captured in the scan.

IPMS 3B RESIDENTIAL 104.03 sqm / 1119.77 sqft  
IPMS 3C RESIDENTIAL 97.15 sqm / 1045.71 sqft

SPEC ID 5ff35008b352000dbc977962

Call 020 7759 2199 to view this property, or visit [www.vitaproperties.uk](http://www.vitaproperties.uk) for more details

27 Northways Parade, College Crescent, London, NW3 5DN | T: 020 7759 2199 | E: [enquiries@vitaproperties.uk](mailto:enquiries@vitaproperties.uk)  
We make all efforts to ensure this information is accurate, but we can't guarantee it.

