



A sleek and sophisticated 3/4 bed, 3 bath apartment, set on the fourth floor (with lift access) of this lovely red brick mansion block, in W9. This delightful property has been recently refurbished with the greatest care and attention to detail. Comprising of an exceptionally large reception room with dining area, original feature fireplace and partition doors leading through to a large study. A sleek kitchen with integrated appliances and abundance of counter/ cupboard space, A huge master bedroom with three-piece en-suite bathroom, second double bedroom, third small-double bedroom and two separate, fully-tiled shower rooms. This property is offered inclusive of brand new, top-quality furnishings and boasts spot lighting throughout, gorgeous hardwood flooring to common areas and plush grey carpets to the bedrooms, as well as boasting an wealth of useful storage space. Found in the heart of Maida Vale there is a great selection of local shops, bars and restaurants right on your doorsteps and fantastic transport links via Maida Vale & Warwick Avenue Station (Bakerloo Line).

- Three Bed, Three Bath
- 4th Floor with Lift Access
- Newly Refurbished
- Tasteful Furnishing
- Bright & Spacious
- Available immediately

Clive Court, Maida Vale, London W9

Weekly Rental Of £995



Call 020 7759 2199 to view this property, or visit www.vitaproperties.uk for more details

27 Northways Parade, College Crescent, London, NW3 5DN | T: 020 7759 2199 | E: enquiries@vitaproperties.uk
We make all efforts to ensure this information is accurate, but we can't guarantee it.

Clive Court, Maida Vale, London W9

Weekly Rental Of £995



Call 020 7759 2199 to view this property, or visit www.vitaproperties.uk for more details

27 Northways Parade, College Crescent, London, NW3 5DN | T: 020 7759 2199 | E: enquiries@vitaproperties.uk
We make all efforts to ensure this information is accurate, but we can't guarantee it.

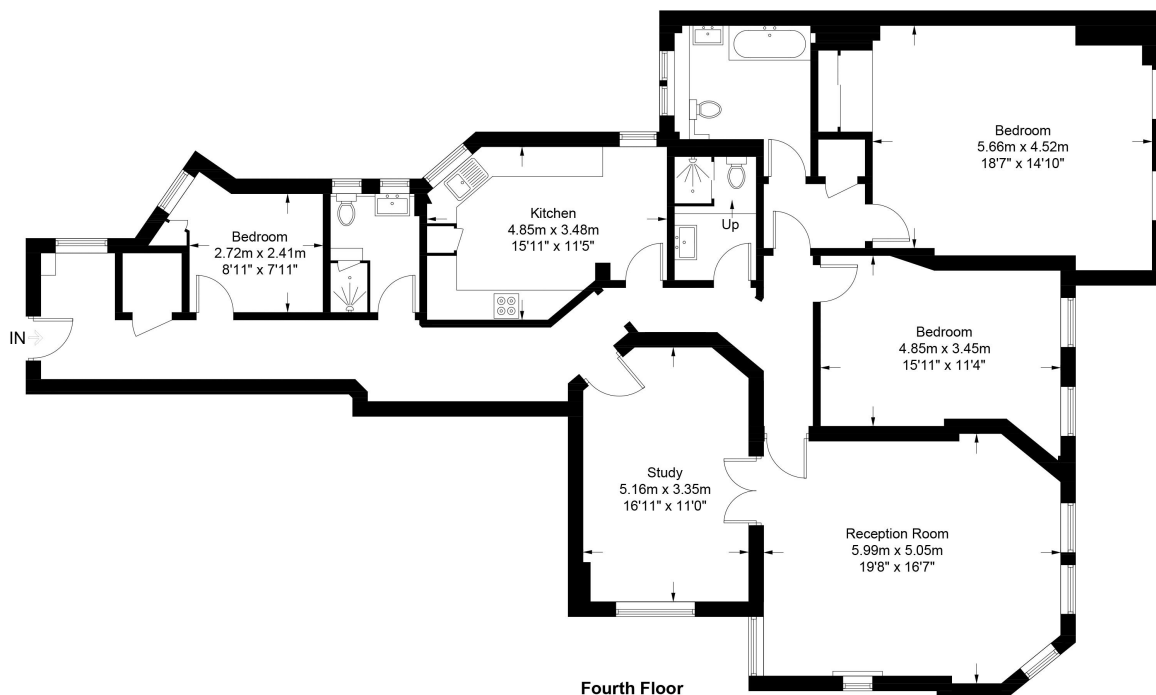
Clive Court, Maida Vale, London W9

Weekly Rental Of £995

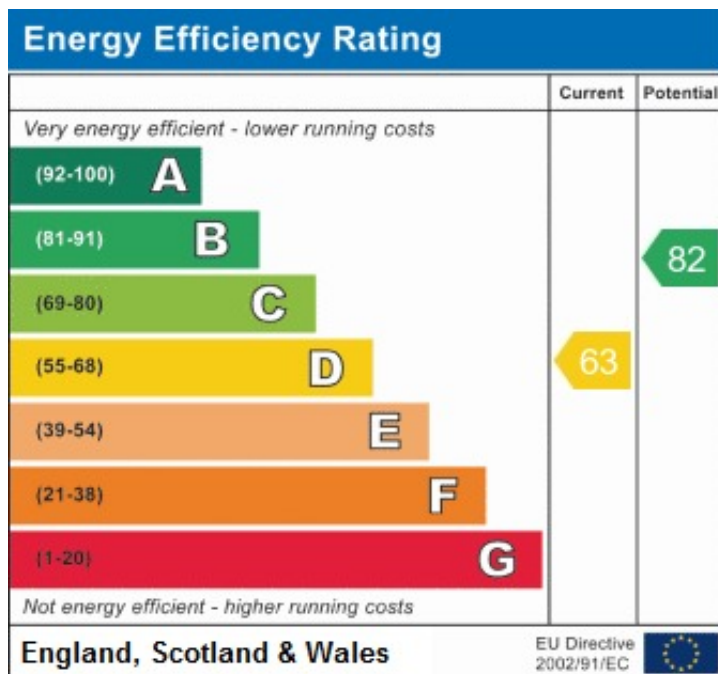
Clive Court, W9



Approximate Gross Internal Area = 1816 sq ft / 168.7 sq m



This plan is for layout guidance only. Not drawn to scale unless stated. Windows and door openings are approximate. Whilst every care is taken in the preparation of this plan, please check all dimensions, shapes and compass bearings before making any decisions reliant upon them. (ID726411)



Call 020 7759 2199 to view this property, or visit www.vitaproperties.uk for more details

27 Northways Parade, College Crescent, London, NW3 5DN | T: 020 7759 2199 | E: enquiries@vitaproperties.uk
We make all efforts to ensure this information is accurate, but we can't guarantee it.