

Marylebone Square, London, W1U

£4,865,000



Marylebone Square is a stunning new development located in the heart of Marylebone Village. This spacious and stunning 2 Bed + Study with a balcony offers circa 1463 Sq Ft in the first New Build development in Marylebone in the last ten years. Marylebone Square has been designed by Simon Bowden Architecture and with interiors by LIV Interiors. The centrepiece of the building is an open courtyard with an expansive glass roof, filling the area with daylight, while open sides bring in fresh air. In keeping with its naturalistic quality, the courtyard is filled with plants and a water feature, instilling a sense of Feng Shui and wellbeing. Access to the apartments is by individual bridges and walkways, making it an open yet intimate entrance space. Floor to ceiling windows and glass sliding doors invite an influx of natural light. Marylebone Square provides easy access to Paddington, Marylebone and Baker Street Stations, or Bond Street Underground where the Elizabeth Line will connect you to Heathrow Airport or Paris via the Eurostar. For entertainment, hail a cab to the Royal Opera House and London's West End, or take a stroll to Selfridges. For weekend walks and relaxing summer evenings, Marylebone Square is equidistant between two of London's Royal Parks, Regents Park and Hyde Park. Marylebone Square has an estimated completion of Q4 2021 and complies with a 10 year build warranty by NHBC. All measurements are approximate and photographs provided for guidance only.

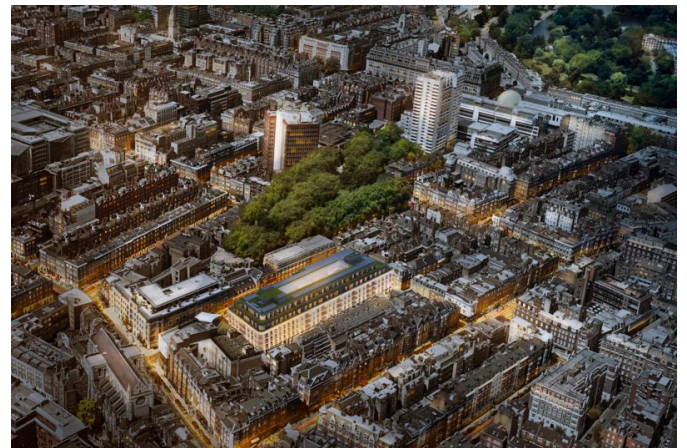
- Over 25% SOLD
- Designed by Simon Bowden Architecture
- Located in the heart of Marylebone
- Underground Parking Available
- Balcony/Terrace
- Luxury New Build
- Due for completion in 2022

Call 020 7759 2199 to view this property, or visit www.vitaproperties.uk for more details

27 Northways Parade, College Crescent, London, NW3 5DN | T: 020 7759 2199 | E: enquiries@vitaproperties.uk
We make all efforts to ensure this information is accurate, but we can't guarantee it.

Marylebone Square, London, W1U

£4,865,000

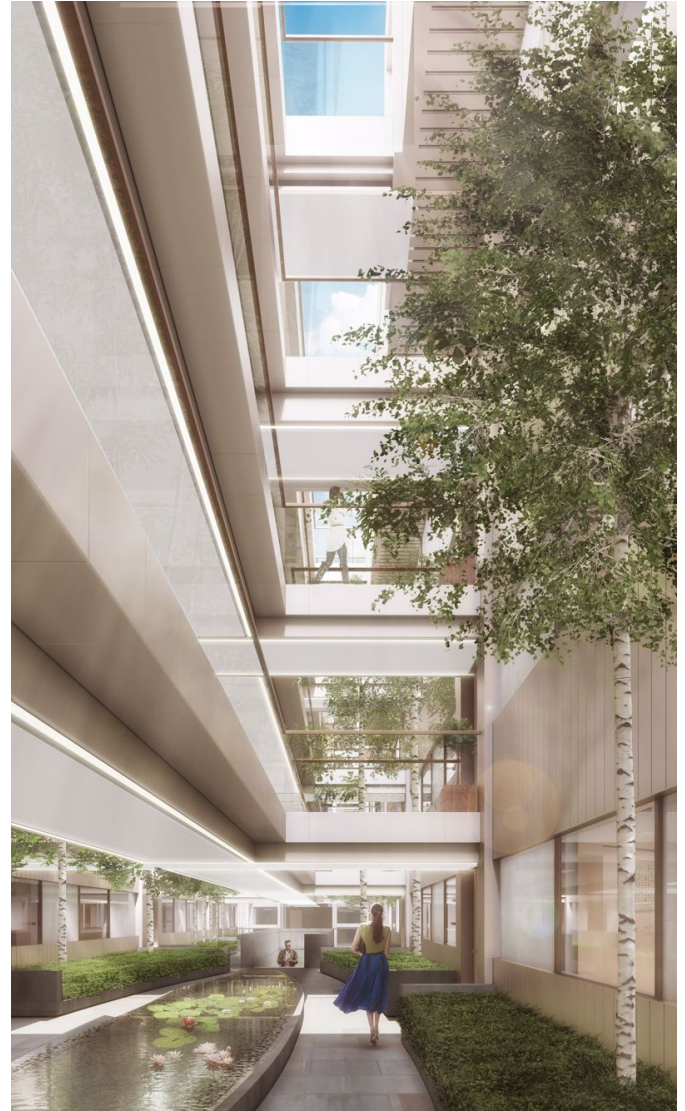


Call 020 7759 2199 to view this property, or visit www.vitaproperties.uk for more details

27 Northways Parade, College Crescent, London, NW3 5DN | T: 020 7759 2199 | E: enquiries@vitaproperties.uk
We make all efforts to ensure this information is accurate, but we can't guarantee it.

Marylebone Square, London, W1U

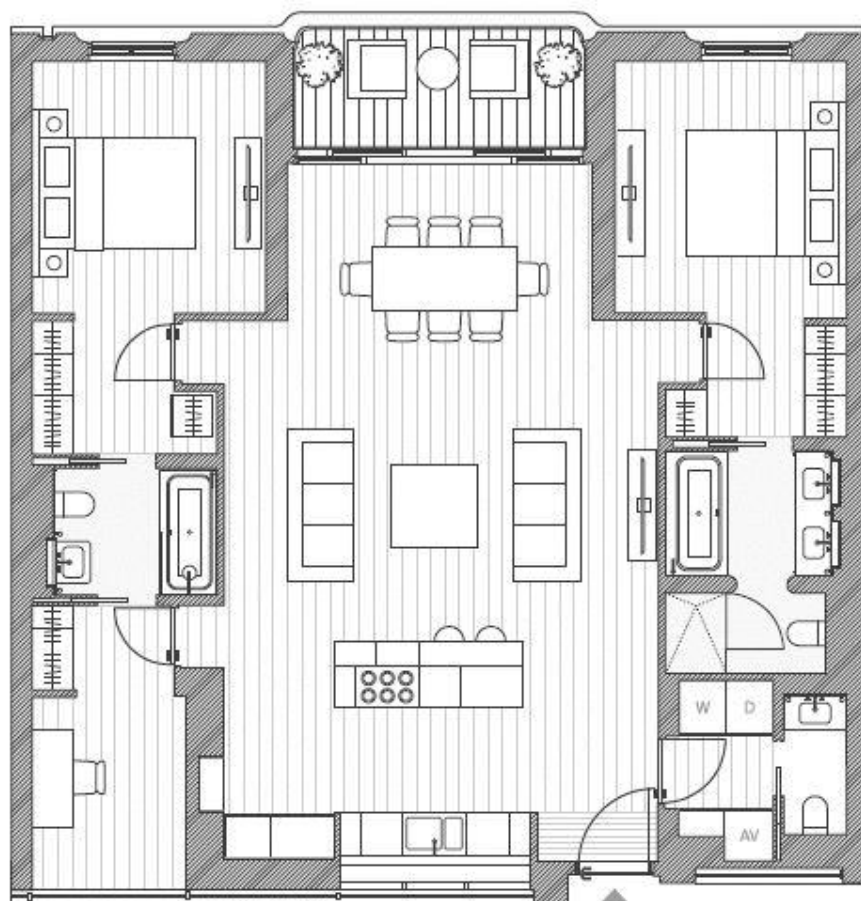
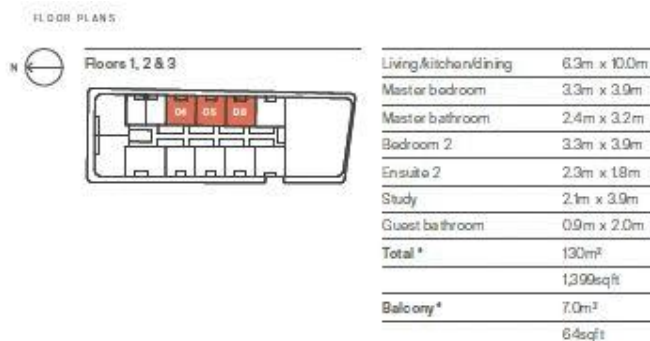
£4,865,000



Call 020 7759 2199 to view this property, or visit www.vitaproperties.uk for more details

27 Northways Parade, College Crescent, London, NW3 5DN | T: 020 7759 2199 | E: enquiries@vitaproperties.uk
We make all efforts to ensure this information is accurate, but we can't guarantee it.

2 Bedroom Apartment & Study Mirrored



*All floorplans are draft and subject to change