



Situated on a premier road in St John's Wood's is this beautifully furnished apartment finished to a high standard. Set on the third floor of a period conversion the property comprises reception room, separate dining area and fully fitted and equipped kitchen, two bedrooms and two bathrooms (one en suite). The property further benefits from being located close to both Maida Vale and St Johns Wood tube stations

- Generous Reception Room
- Smart Contemporary Fitted Kitchen With Breakfast Bar
- Contemporary Fully Tiled Family Shower Room
- 2 Bathrooms
- Modern

Hamilton Terrace, St Johns Wood, London, NW8

Weekly Rental Of £725



Call 020 7759 2199 to view this property, or visit www.vitaproperties.uk for more details

27 Northways Parade, College Crescent, London, NW3 5DN | T: 020 7759 2199 | E: enquiries@vitaproperties.uk
We make all efforts to ensure this information is accurate, but we can't guarantee it.

Hamilton Terrace, St Johns Wood, London, NW8

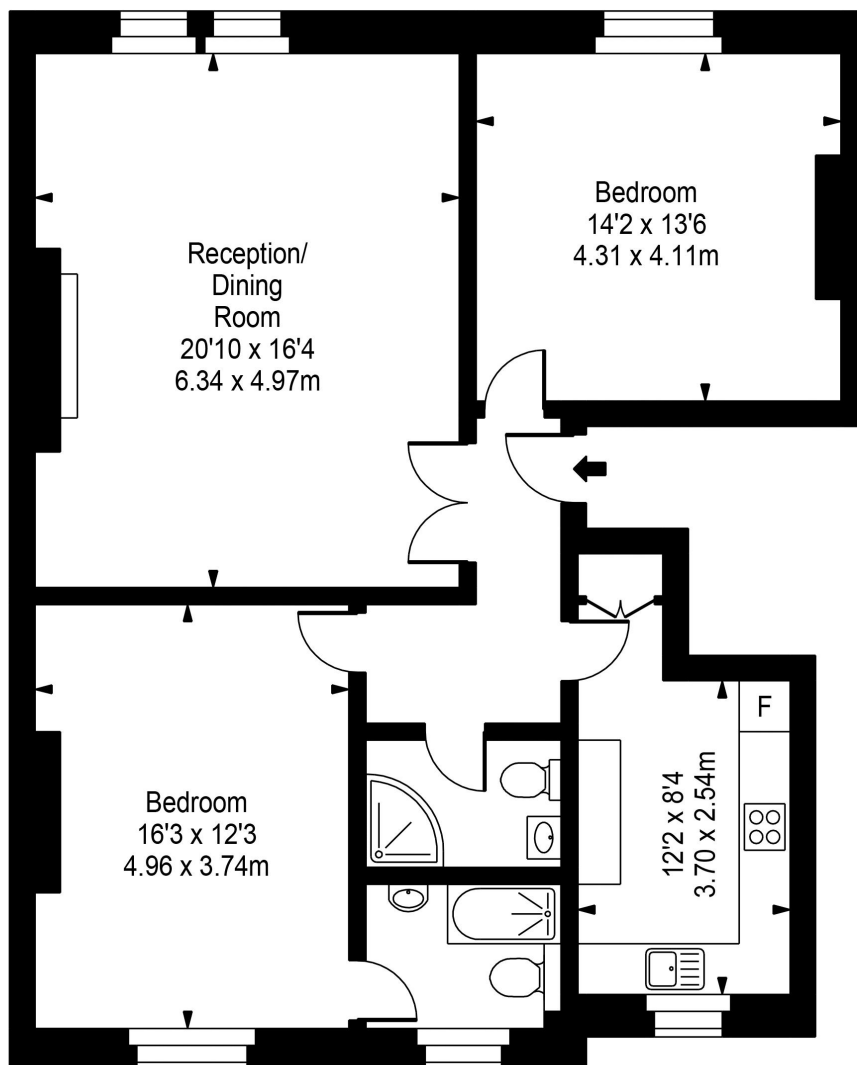
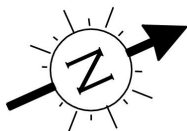
Weekly Rental Of £725



Call 020 7759 2199 to view this property, or visit www.vitaproperties.uk for more details

27 Northways Parade, College Crescent, London, NW3 5DN | T: 020 7759 2199 | E: enquiries@vitaproperties.uk
We make all efforts to ensure this information is accurate, but we can't guarantee it.

Hamilton Terrace



Top Floor

Approx Gross Internal Area **1040 Sq Ft - 96.62 Sq M**



FOR ILLUSTRATIVE PURPOSES ONLY. NOT TO SCALE.

Whilst every attempt has been made to ensure the accuracy of the floorplan shown, all measurements, positioning, fixtures, fittings and any other data shown are an approximate interpretation for illustrative purposes only and are not to scale. No responsibility is taken for any error, omission, miss-statement or use of data shown. Floor plan by www.bestangle.co.uk

