

Whittlebury Mews East, Primrose Hill, London, NW1

£1,900,000



Introducing an exquisite three-bedroom mews house with underground parking, located within a boutique collection of modern residences in the highly sought-after Primrose Hill area. This stylish home presents a contemporary design, offering spacious open-plan living within a secure gated community. As you step into the house on the ground floor, you are welcomed by a generously sized entrance hallway featuring a convenient guest cloakroom. The ground floor also encompasses a spacious double lounge, providing a comfortable and inviting space for relaxation and entertainment. Descending to the lower ground floor, you'll discover an attractive study area that opens up to a private terrace, creating a tranquil outdoor retreat. The modern open-plan kitchen and dining room on this level provide a perfect setting for culinary delights and social gatherings. Additionally, this floor benefits from a separate entrance directly accessible from the underground parking space, ensuring convenience and ease of access. The first floor of this remarkable residence offers two sizable double bedrooms, each accompanied by its own en-suite bathroom. The presence of en-suite facilities enhances privacy and luxury. Another double bedroom, a guest cloakroom, and access to the roof terrace can be found on the top floor, allowing residents to enjoy al fresco moments and panoramic views. Conveniently positioned, this property benefits from excellent transport links, with Chalk Farm

- Private underground parking with direct access to property
- Located moments from Primrose Hill park and high street
- Three Double Bedrooms
- Benefits from all bedrooms having gorgeous en-suites
- Private patio and terrace
- A breath-taking standard of design and quality
- Offered chain free
- Approx 2276 Sq Ft (211 SqM)

Call 020 7759 2199 to view this property, or visit www.vitaproperties.uk for more details

27 Northways Parade, College Crescent, London, NW3 5DN | T: 020 7759 2199 | E: enquiries@vitaproperties.uk
We make all efforts to ensure this information is accurate, but we can't guarantee it.

Whittlebury Mews East, Primrose Hill, London, NW1

£1,900,000



The
ark ar
or
flat
n an
e Hi
a

ome
nce.
wn.



Call 020 7759 2199 to view this property, or visit www.vitaproperties.uk for more details

27 Northways Parade, College Crescent, London, NW3 5DN | T: 020 7759 2199 | E: enquiries@vitaproperties.uk
We make all efforts to ensure this information is accurate, but we can't guarantee it.

Whittlebury Mews East, Primrose Hill, London, NW1

£1,900,000



Call 020 7759 2199 to view this property, or visit www.vitaproperties.uk for more details

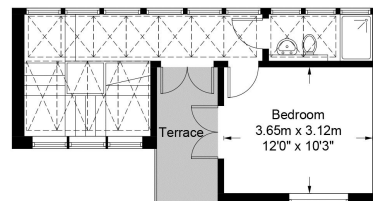
27 Northways Parade, College Crescent, London, NW3 5DN | T: 020 7759 2199 | E: enquiries@vitaproperties.uk
We make all efforts to ensure this information is accurate, but we can't guarantee it.

Whittlebury Mews East, Primrose Hill, London, NW1

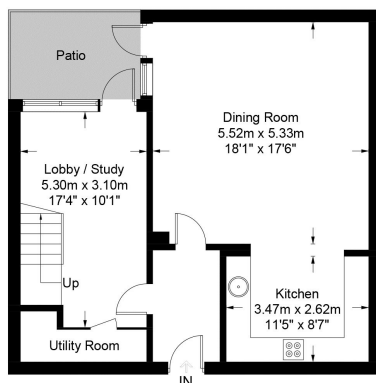
£1,900,000

Whittlebury Mews, NW1

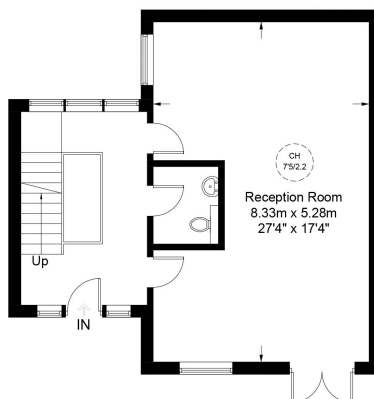
Approximate Gross Internal Area = 2300 sq ft / 213.7 sq m



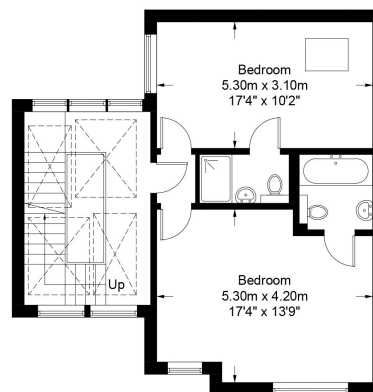
Second Floor



Lower Ground Floor



Ground Floor

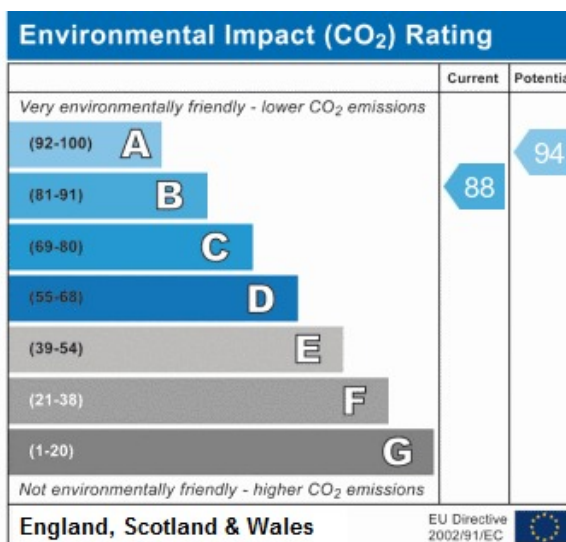
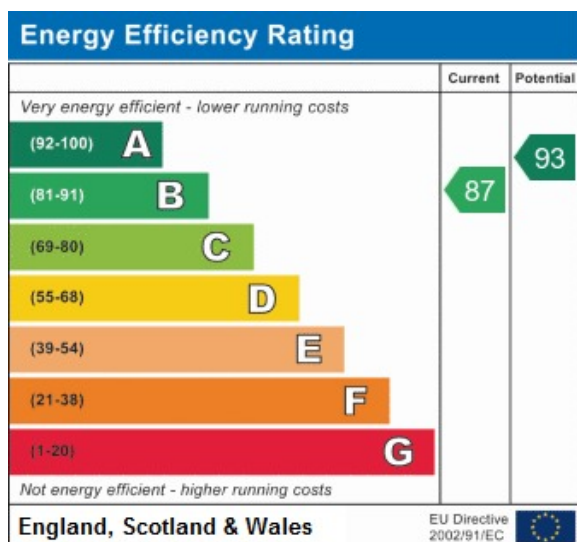


First Floor



**Certified
Property
Measurer**

This plan is for layout guidance only. Not drawn to scale unless stated. Windows and door openings are approximate. Whilst every care is taken in the preparation of this plan, please check all dimensions, shapes and compass bearings before making any decisions reliant upon them. (ID915625)



Call 020 7759 2199 to view this property, or visit www.vitaproperties.uk for more details

27 Northways Parade, College Crescent, London, NW3 5DN | T: 020 7759 2199 | E: enquiries@vitaproperties.uk
We make all efforts to ensure this information is accurate, but we can't guarantee it.