

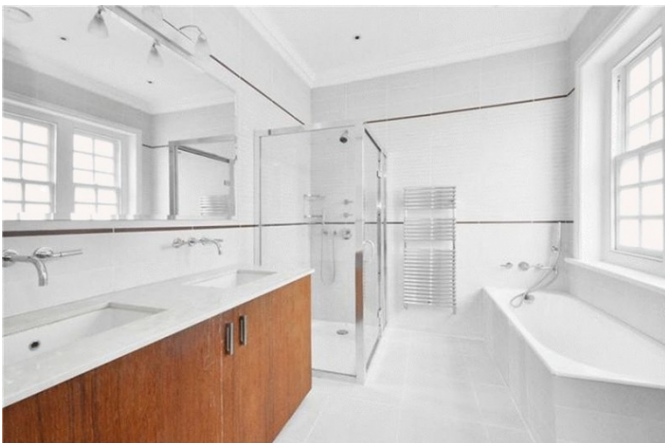


Available 16th September 2022 - A superb four bedroom top floor family apartment which has been recently renovated to a very high standard. This fantastic apartment benefits from having solid wood flooring, four double bedrooms, three bathrooms and a large reception room. Bracknell Gardens is quietly located just off Frognal Lane which is in close proximity of Finchley Road underground (Jubilee Line) Set in this Victorian conversion benefiting from quality wooden flooring, LCD TVs with 5.1 surround sound, solid imported walnut and teak wood kitchen. Accommodation comprises large reception, fully fitted kitchen / dining room, four bedrooms, three bathrooms, small balcony

- 37" Plasma screen with 5.1 amplifier and ceiling speakers
- Riva Teak door Eat-in Kitchen with Granite worktops
- 3 Bathrooms - 1 En Suite - all with Underfloor heating
- Solid Oak Wood Flooring on second floor, carpeted top floor
- Master bedroom with built-in walnut sliding door wardrobes
- Available 16th September 2022

Bracknell Gardens, Hampstead, London, NW3

Weekly Rental Of £1,690



Call 020 7759 2199 to view this property, or visit www.vitaproperties.uk for more details

27 Northways Parade, College Crescent, London, NW3 5DN | T: 020 7759 2199 | E: enquiries@vitaproperties.uk
We make all efforts to ensure this information is accurate, but we can't guarantee it.

Bracknell Gardens, Hampstead, London, NW3

Weekly Rental Of £1,690



PENTHOUSE BRACKNELL GARDENS



SECOND FLOOR



THIRD FLOOR

 = RH = RESTRICTED HEAD ROOM BELOW 5 FT. / 1.5 M. MAX

APPROXIMATE GROSS INTERNAL AREA = 2024 SQ.FT. (188 SQ. M.)

Call 020 7759 2199 to view this property, or visit www.vitaproperties.uk for more details

27 Northways Parade, College Crescent, London, NW3 5DN | T: 020 7759 2199 | E: enquiries@vitaproperties.uk
We make all efforts to ensure this information is accurate, but we can't guarantee it.