



Available now and offered unfurnished is this stunning 2 bedroom, 2 bathroom ground floor apartment of approx. 1,600 sq.ft. / 148.6 sq.m.) forming part of an ambassadorial residence moments from The Heath and approx. 10 mins to Hampstead Village. The uniquely large apartment benefits from having off street parking and private patio garden leading to stunning communal gardens. There is also a spacious reception area with dining hall and stunning granite finished kitchen, master bedroom with vast en suite dressing room and beautifully finished en suite bathroom and 2nd bedroom with breathtaking bathroom with steam room.

- Moments to Hampstead Heath and a short stroll from Hampstead Village
- Modern finishes
- Steam room
- Managed
- Available Now
- A must see apartment!

Templewood Avenue, Hampstead, London, NW3

Weekly Rental Of £1,260

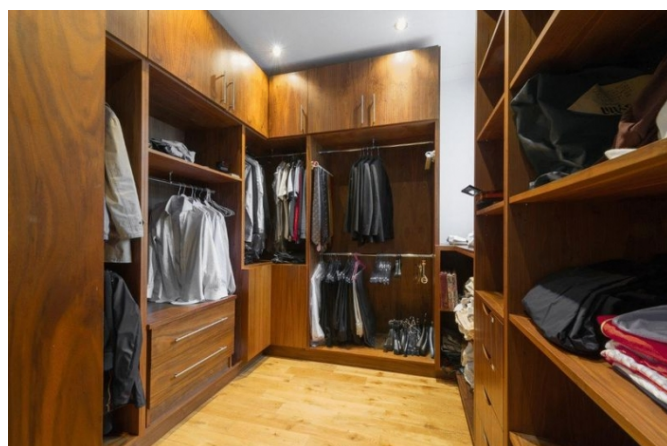
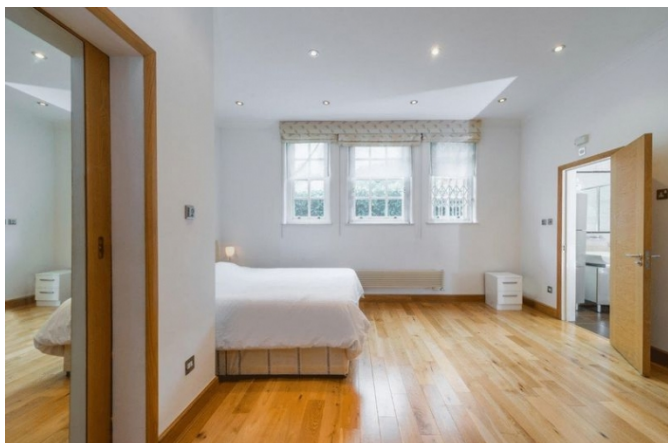


Call 020 7759 2199 to view this property, or visit www.vitaproperties.uk for more details

27 Northways Parade, College Crescent, London, NW3 5DN | T: 020 7759 2199 | E: enquiries@vitaproperties.uk
We make all efforts to ensure this information is accurate, but we can't guarantee it.

Templewood Avenue, Hampstead, London, NW3

Weekly Rental Of £1,260



Call 020 7759 2199 to view this property, or visit www.vitaproperties.uk for more details

27 Northways Parade, College Crescent, London, NW3 5DN | T: 020 7759 2199 | E: enquiries@vitaproperties.uk
We make all efforts to ensure this information is accurate, but we can't guarantee it.

Templewood Avenue, Hampstead, London, NW3

Weekly Rental Of £1,260

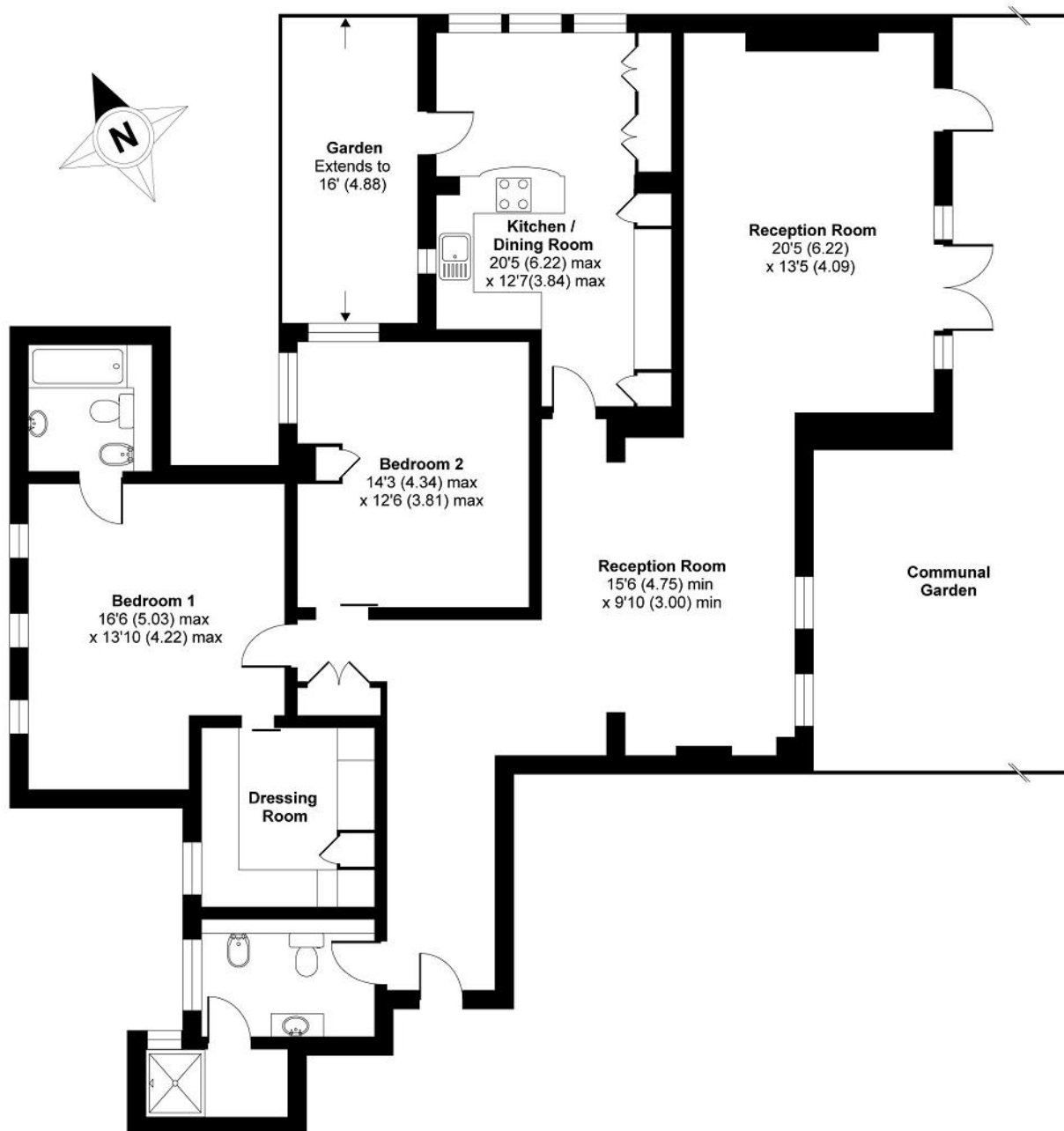


Call 020 7759 2199 to view this property, or visit www.vitaproperties.uk for more details

27 Northways Parade, College Crescent, London, NW3 5DN | T: 020 7759 2199 | E: enquiries@vitaproperties.uk
We make all efforts to ensure this information is accurate, but we can't guarantee it.

Templewood Ave NW3

APPROX. GROSS INTERNAL FLOOR AREA 1621 SQFT / 150.5 SQM



Call 020 7759 2199 to view this property, or visit www.vitaproperties.uk for more details

