



Available 09 December 2022 and located within 7 mins walk to Willesden Green tube and high street is this spacious two double second floor apartment (with lift) situated at the quiet rear of this mansion block with rooftop views. Offering gated off street parking this newly decorated apartment further benefits, a fully fitted eat in kitchen. fitted storage throughout, a fully tiled shower room and a comfortable reception room. Willesden Green is zone 2 on the jubilee line giving access to the West End and City within 25 minutes, The flat is being offered furnished or unfurnished

- Gated off street parking
- Storage throughout
- High ceilings
- Full fitted eat in kitchen inc dishwasher
- Second floor with a lift - Situated at the quiet rear of this mansion block with rooftop views
- Available 09 December 2022

# Chichele Road, Willesden Green, London, NW2

Weekly Rental Of £450



Call 020 7759 2199 to view this property, or visit [www.vitaproperties.uk](http://www.vitaproperties.uk) for more details

27 Northways Parade, College Crescent, London, NW3 5DN | T: 020 7759 2199 | E: [enquiries@vitaproperties.uk](mailto:enquiries@vitaproperties.uk)  
We make all efforts to ensure this information is accurate, but we can't guarantee it.



# Chichele Road, Willesden Green, London, NW2

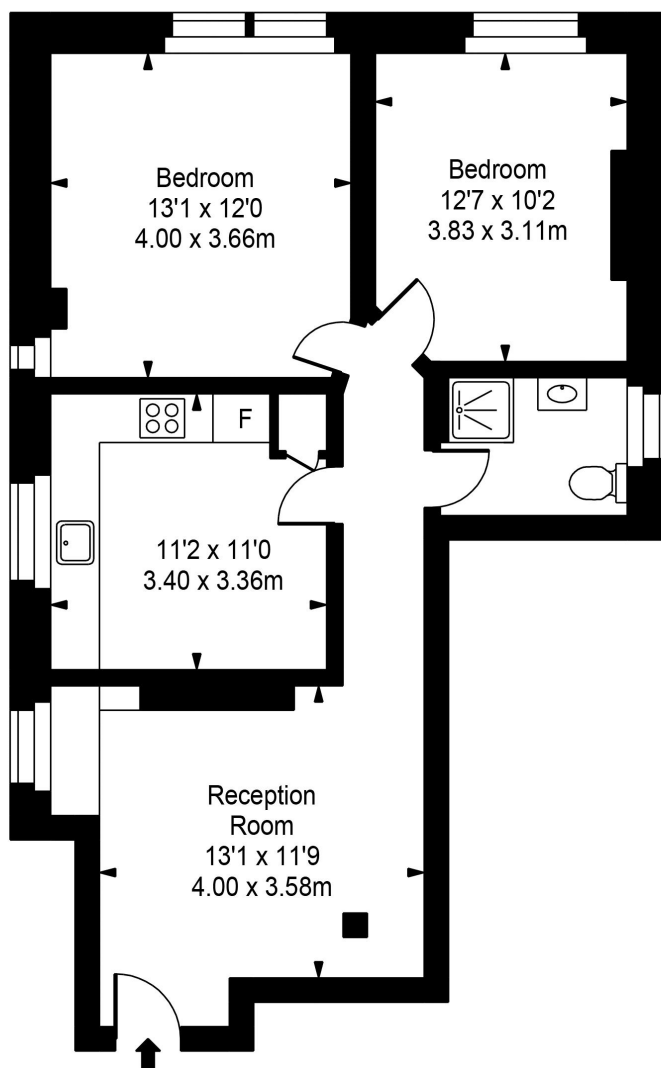
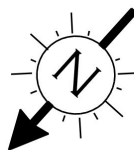
Weekly Rental Of £450



Call 020 7759 2199 to view this property, or visit [www.vitaproperties.uk](http://www.vitaproperties.uk) for more details

27 Northways Parade, College Crescent, London, NW3 5DN | T: 020 7759 2199 | E: [enquiries@vitaproperties.uk](mailto:enquiries@vitaproperties.uk)  
We make all efforts to ensure this information is accurate, but we can't guarantee it.

## Chichele Mansions



Second Floor



Approx Gross Internal Area **715 Sq Ft - 66.42 Sq M**

For Illustration Purposes Only - Not To Scale  
Floor plan by [www.bestangle.co.uk](http://www.bestangle.co.uk)