



A luxurious, unique and spacious top floor duplex apartment set within a beautifully maintained conversion positioned within walking distance to St John's Wood & Maida Vale Stations. This apartment boasts two double bedrooms, plenty of storage including loft space, a full en-suite bathroom to the master with a roll top bath and separate shower cubicle and a large, brand new eat in kitchen. The second double bedroom has an en-suite shower room leading onto a south facing private terrace. In addition, there is a large reception room with a working fire place, a large cloakroom and an integrated sound system wired to all rooms in the apartment. Abercorn Place is a leafy residential street in the heart of St John's Wood and offers easy access to the wonderful range of amenities this sought after area has to offer. Transport links include St John's Wood Underground station (Jubilee Line), for easy access to the City and West End. Offered chain free with a share of the freehold.

- Duplex apartment
- Brand new bathrooms
- Brand new eat in kitchen
- Wooden Floors
- Guest WC
- Air Conditioning
- Share of freehold

Abercorn Place, St Johns Wood, London, NW8

£1,295,000



Call 020 7759 2199 to view this property, or visit www.vitaproperties.uk for more details

27 Northways Parade, College Crescent, London, NW3 5DN | T: 020 7759 2199 | E: enquiries@vitaproperties.uk
We make all efforts to ensure this information is accurate, but we can't guarantee it.

Abercorn Place, St Johns Wood, London, NW8

£1,295,000



Call 020 7759 2199 to view this property, or visit www.vitaproperties.uk for more details

27 Northways Parade, College Crescent, London, NW3 5DN | T: 020 7759 2199 | E: enquiries@vitaproperties.uk
We make all efforts to ensure this information is accurate, but we can't guarantee it.

Abercorn Place, St Johns Wood, London, NW8

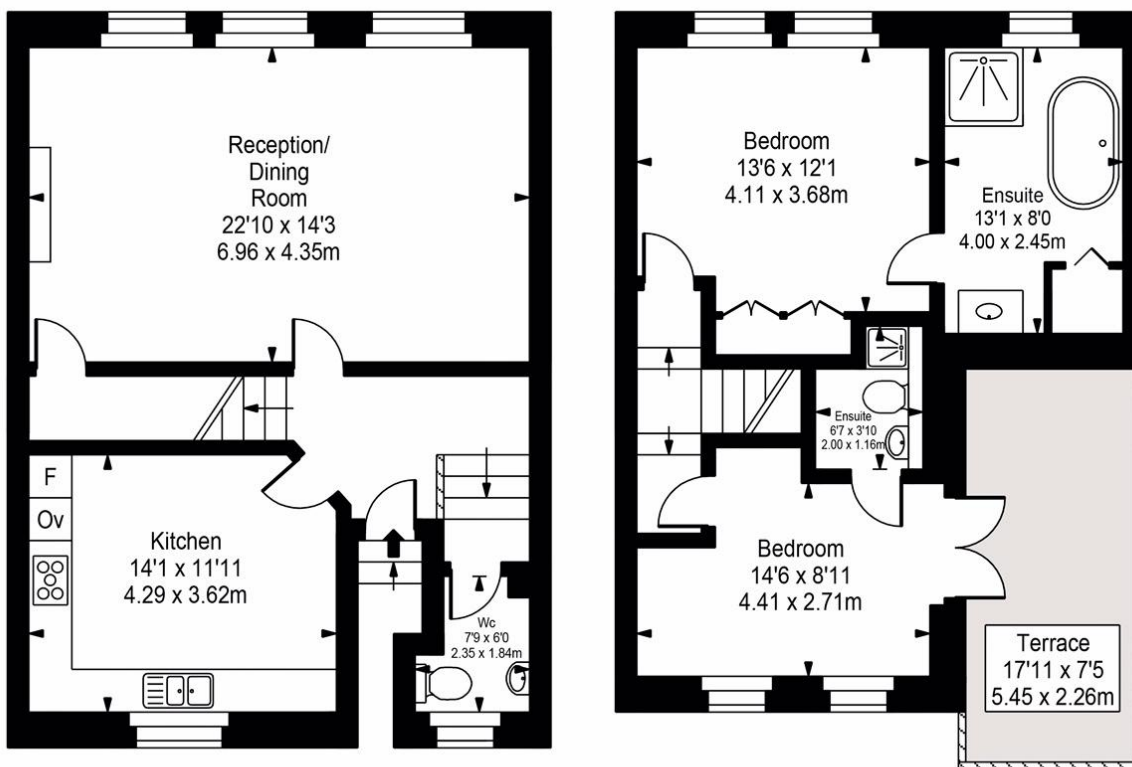
£1,295,000



Call 020 7759 2199 to view this property, or visit www.vitaproperties.uk for more details

27 Northways Parade, College Crescent, London, NW3 5DN | T: 020 7759 2199 | E: enquiries@vitaproperties.uk
We make all efforts to ensure this information is accurate, but we can't guarantee it.

Abercorn Place



Top Floor

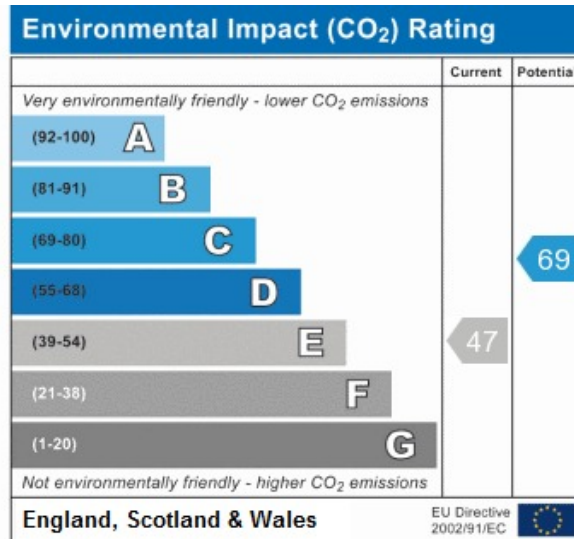
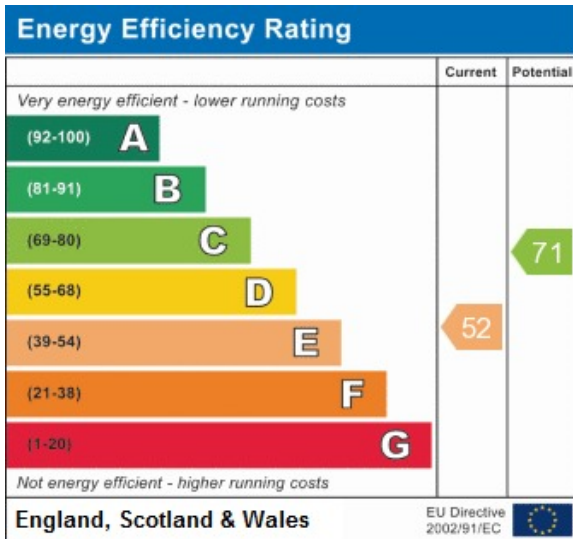


Approx Gross Internal Area **1167 Sq Ft - 108.41 Sq M**

FOR ILLUSTRATIVE PURPOSES ONLY. NOT TO SCALE.

Whilst every attempt has been made to ensure the accuracy of the floorplan shown, all measurements, positioning, fixtures, fittings and any other data shown are an approximate interpretation for illustrative purposes only and are not to scale. No responsibility is taken for any error, omission, miss-statement or use of data shown.

Floor plan by www.bestangle.co.uk



Call 020 7759 2199 to view this property, or visit www.vitaproperties.uk for more details