

# Eden Close, Kensington, London, W8

Weekly Rental Of £600



Available 24th August and offered furnished - A Contemporary and spacious two double bedroom, two bathroom (1 en-suite) apartment refurbished to a high standard and with modern furniture. The apartment comprises a semi open plan kitchen to dining & reception room, modern fully tiled bathrooms, wooden floors, plasma TV's and secure entrance from Adam & Eve Mews. Eden Close couldn't be any closer to the high street and is within a stones throw of High Street Kensington tube.

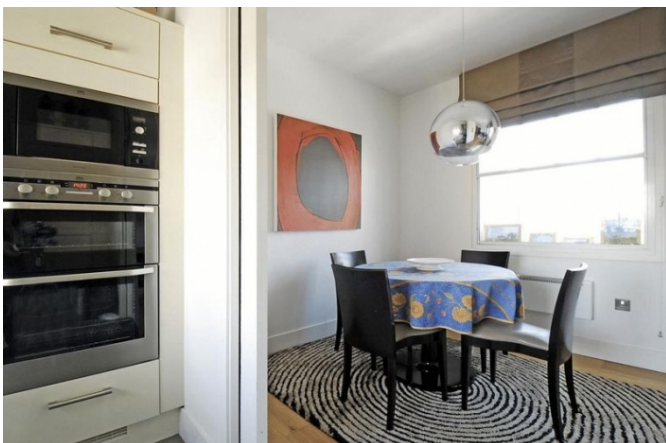
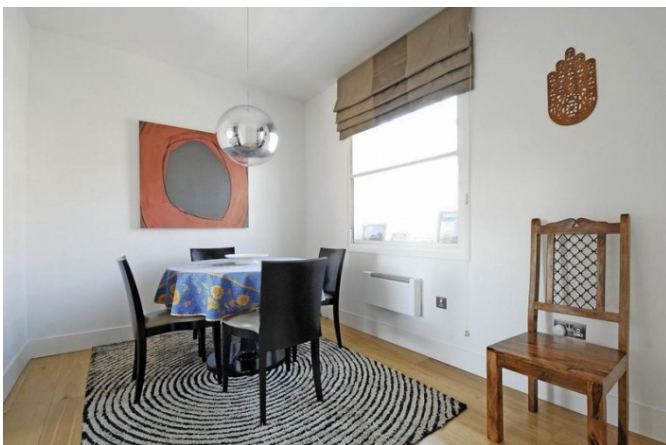
- No parking permit will be granted from council
- Furnished and finished to a high standard
- Seconds to tube
- Wood flooring
- Available 24th August

Call 020 7759 2199 to view this property, or visit [www.vitaproperties.uk](http://www.vitaproperties.uk) for more details

27 Northways Parade, College Crescent, London, NW3 5DN | T: 020 7759 2199 | E: [enquiries@vitaproperties.uk](mailto:enquiries@vitaproperties.uk)  
We make all efforts to ensure this information is accurate, but we can't guarantee it.

# Eden Close, Kensington, London, W8

Weekly Rental Of £600



Call 020 7759 2199 to view this property, or visit [www.vitaproperties.uk](http://www.vitaproperties.uk) for more details

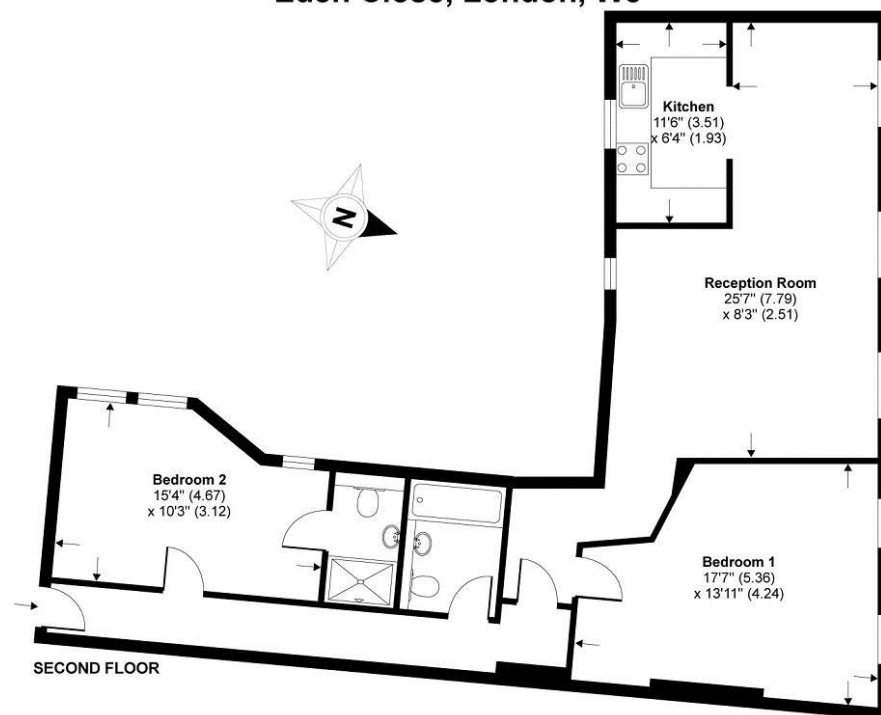
27 Northways Parade, College Crescent, London, NW3 5DN | T: 020 7759 2199 | E: [enquiries@vitaproperties.uk](mailto:enquiries@vitaproperties.uk)  
We make all efforts to ensure this information is accurate, but we can't guarantee it.

# Eden Close, Kensington, London, W8

Weekly Rental Of £600



## Eden Close, London, W8



Whilst every attempt has been made to ensure the accuracy of the floor plan contained here, measurements of doors, windows and rooms are approximate and no responsibility is taken for any error, omission or misstatement. These plans are for representation purposes only as defined by RICS Code of Measuring Practice and should be used as such by any prospective purchaser. Specifically no guarantee is given on the total square footage of the property if quoted on this plan. Any figure given is for initial guidance only and should not be relied on as a basis of valuation.

Copyright nichecom.co.uk 2012 Produced for Chesterton Humberts REF : 243121

Call 020 7759 2199 to view this property, or visit [www.vitaproperties.uk](http://www.vitaproperties.uk) for more details

27 Northways Parade, College Crescent, London, NW3 5DN | T: 020 7759 2199 | E: [enquiries@vitaproperties.uk](mailto:enquiries@vitaproperties.uk)  
We make all efforts to ensure this information is accurate, but we can't guarantee it.